



**40** YEARS OF  
**FinOlex**  
PIPES



**AGRICULTURE**   
**PIPES & FITTINGS**  
PRODUCT CATALOGUE

# PVC-U AGRICULTURE PIPES & FITTINGS

Finolex offers an extensive range of agriculture PVC-U pressure pipes and fittings. These pipes and fittings are designed specifically for varied pressure and gravity flow applications in agriculture, irrigation, swimming pool applications, and domestic applications including potable water supply.

Finolex agriculture PVC-U pressure pipes offer significant advantages over conventional C.I., D.I., and R.C.C pipes. They are light in weight, easy to transport and install, and have a high flow rate. High resistance to chemicals and corrosion ensures an extended product life.

Stringent quality assurance approach by Finolex across all stages of manufacturing gives the product a high reliability, making our agriculture PVC-U pressure pipes a preferred choice for farmers, government institutions, domestic and commercial establishments, and quality conscious people across the country.

Finolex agriculture PVC-U pipes are manufactured in a wide range of sizes and pressure classes conforming to standard IS 4985:2000. These pipes are available in sizes ranging from 20 to 400 mm in different pressure classes. They are available in two types of joints, Selfit (solvent cement joint) and Ringfit (rubber ring joint).

A wide range of moulded fittings manufactured as per the IS 7834 standards are available. We also have fabricated fittings manufactured as per the IS 10124 standards.

## PVC - U AGRICULTURE - SELFIT PIPE

Conforming to IS 4985

One end of the Selfit pipe is self-socketed and the other is plain. The snug fit of one pipe into the other due to the self-socketed and plain pipe fitment and solvent cement application eliminates the use of any couplers.

### DIMENSIONS OF SELFIT PVC-U PIPES

Conforming to IS 4985

Nominal Outside Diameter in mm	Nominal Outside Diameter in inch	Mean Outside Diameter in mm		Wall Thickness in mm (t)												Standard Pipe Length in Meters
				Class 1 0.25 MPa		Class 2 0.4 MPa		Class 3 0.6 MPa		Class 4 0.8 MPa		Class 5 1.0 MPa		Class 6 1.25 MPa		
		Min	Max	Min	Max	Min	Max	Min	Max	Min	Max	Min	Max	Min	Max	
25	¾"	25.0	25.3	-	-	-	-	-	-	1.2	1.6	1.4	1.8	1.7	2.1	3,5,6
32	1"	32.0	32.3	-	-	-	-	-	-	1.5	1.8	1.8	2.2	2.2	2.7	3,5,6
40	1½"	40.0	40.3	-	-	-	-	1.4	1.8	1.8	2.2	2.2	2.7	2.8	3.3	3,5,6
50	1½"	50.0	50.3	-	-	-	-	1.7	2.1	2.3	2.8	2.8	3.3	3.4	4.0	3,5,6
63	2"	63.0	63.3	-	-	1.5	1.9	2.2	2.7	2.8	3.3	3.5	4.1	4.3	5.0	3,5,6
75	2½"	75.0	75.3	-	-	1.8	2.2	-	-	-	-	-	-	-	-	3
75	2½"	75.0	75.3	-	-	1.8	2.2	2.6	3.1	3.4	4.0	4.2	4.9	5.1	5.9	5,6
90	3"	90.0	90.3	1.3	1.7	2.1	2.6	3.1	3.7	4.0	4.6	5.0	5.7	6.1	7.1	5,6
110	4"	110.0	110.4	1.6	2.0	2.5	3.0	3.7	4.3	4.9	5.6	6.1	7.1	7.5	8.7	3,5,6
125	4½"	125.0	125.4	1.8	2.2	2.9	3.4	4.3	5.0	5.6	6.4	6.9	8.0	8.5	9.8	6
140	5"	140.0	140.5	2.0	2.4	3.2	3.8	4.8	5.5	6.3	7.3	7.7	8.9	8.5	9.8	3,6
160	6"	160.0	160.5	2.3	2.8	3.7	4.3	5.4	6.2	7.2	8.3	8.8	10.2	10.9	12.6	3,6
180	7"	180.0	180.6	2.6	3.1	4.2	4.9	6.1	7.1	8.0	9.2	9.9	11.4	-	-	3,6
200	8"	200.0	200.6	2.9	3.4	4.6	5.3	6.8	7.9	8.9	10.3	11.0	12.7	-	-	3,6
225	9"	225.0	225.7	3.3	3.9	5.2	6.0	7.6	8.8	10.0	11.5	12.4	14.3	-	-	6
250	10"	250.0	250.8	3.6	4.2	5.7	6.5	8.5	9.8	11.2	12.9	13.8	15.9	-	-	3,6
280	11"	280.0	280.9	4.1	4.8	6.4	7.4	9.5	11.0	12.5	14.4	15.4	17.8	-	-	6
315	12"	315.0	316.0	4.6	5.3	7.2	8.3	10.7	12.4	14.0	16.1	17.3	19.9	-	-	3,6
355	14"	355.0	356.1	5.1	5.9	8.1	9.4	12.0	13.8	15.8	18.2	19.6	22.6	-	-	6
400	16"	400.0	401.2	5.8	6.7	9.1	10.5	13.5	15.6	17.8	20.5	22.0	25.3	-	-	6

As per IS 4985

Our pipes and fittings are recommended for water temperatures ranging from 1°C to 45°C. Occasional rise in temperatures in the summer with concurrent reduction in temperature during nights has no adverse effect on the working pressure of pipes.

**Batch number logic:**

Year	Month	Day	Mc.No.	Shift
xxxx	xx	xx	xxx	x

\*As the usage temperature increases, the strength of the pipes reduces along with the working pressure.

For example, the batch number of pipes produced on Mc. no. 20 on 1st June 2021 in the 1st shift will be 202106010201

## DIMENSIONS OF PVC-U RIGID AGRICULTURE PLAIN PIPES

Conforming to IS 4985

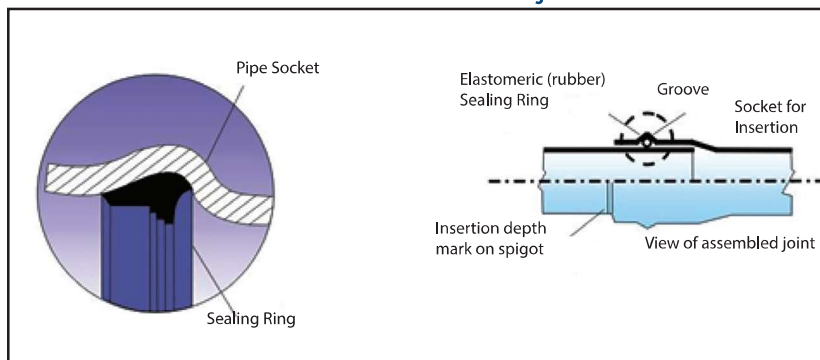
Nominal Outside Diameter in mm	Nominal Outside Diameter in inch	Mean Outside Diameter in mm		Wall Thickness in mm (t)				Standard Pipe Length in Meters
				Class 5 1.0 MPa		Class 6 1.25 MPa		
		Min	Max	Min	Max	Min	Max	
20	½"	20.0	20.3	1.1	1.5	-	-	3, 5
20	½"	20.0	20.3	1.1	1.5	1.4	1.8	6
25	¾"	25.0	25.3	1.4	1.8	1.7	2.1	5
32	1"	32.0	32.3	1.8	2.2	2.2	2.7	5

## PVC - U AGRICULTURE - RINGFIT PIPE

Conforming to IS 4985

Finolex Industries introduced this unique range of PVC-U pipes for the first time in India. These pipes are especially designed for higher diameter requirements and eliminate the need for use of solvent cement. The range includes sizes from 63 mm to 400 mm diameter; in 2.5,4,6,8, 10 and 12.5 kgf/cm<sup>2</sup> working pressure classes.

View of assembled joint



## DIMENSIONS OF RINGFIT PVC-U PIPES

Conforming to IS 4985

Nominal Outside Diameter in mm	Nominal Outside Diameter in inch	Mean Outside Diameter in mm		Wall Thickness in mm (t)												Standard Pipe Length in Meters
				Class 1 0.25 MPa		Class 2 0.4 MPa		Class 3 0.6 MPa		Class 4 0.8 MPa		Class 5 1.0 MPa		Class 6 1.25 MPa		
		Min	Max	Min	Max	Min	Max	Min	Max	Min	Max	Min	Max	Min	Max	
63	2"	63.0	63.3	-	-	1.5	1.9	2.2	2.7	2.8	3.3	3.5	4.1	4.3	5.0	6
75	2½"	75.0	75.3	-	-	-	-	2.6	3.1	-	-	-	-	-	-	3
75	2½"	75.0	75.3	-	-	1.8	2.2	2.6	3.1	3.4	4.0	4.2	4.9	5.1	5.9	6
90	3"	90.0	90.3	-	-	2.1	2.6	3.1	3.7	4.0	4.6	5.0	5.7	6.1	7.1	6
110	4"	110.0	110.4	-	-	-	-	3.7	4.3	-	-	-	-	-	-	3
110	4"	110.0	110.4	-	-	2.5	3.0	3.7	4.3	4.9	5.6	6.1	7.1	7.5	8.7	6
125	4½"	125.0	125.4	-	-	2.9	3.4	4.3	5.0	5.6	6.4	6.9	8.0	8.5	9.8	6
140	5"	140.0	140.5	-	-	3.2	3.8	4.8	5.5	6.3	7.3	7.7	8.9	9.5	11.0	6
160	6"	160.0	160.5	-	-	3.7	4.3	5.4	6.2	7.2	8.3	8.8	10.2	10.9	12.6	6
180	7"	180.0	180.6	2.6	3.1	4.2	4.9	6.1	7.1	8.0	9.2	9.9	11.4	-	-	6
200	8"	200.0	200.6	2.9	3.4	4.6	5.3	6.8	7.9	8.9	10.3	11.0	12.7	-	-	6
225	9"	225.0	225.7	3.3	3.9	5.2	6.0	7.6	8.8	10.0	11.5	12.4	14.3	-	-	6
250	10"	250.0	250.8	3.6	4.2	5.7	6.5	8.5	9.8	11.2	12.9	13.8	15.9	-	-	6
280	11"	280.0	280.9	4.1	4.8	6.4	7.4	9.5	11.0	12.5	14.4	15.4	17.8	-	-	6
315	12"	315.0	316.0	4.6	5.3	7.2	8.3	10.7	12.4	14.0	16.1	17.3	19.9	-	-	6
355	14"	355.0	356.1	5.1	5.9	8.1	9.4	12.0	13.8	15.8	18.2	19.6	22.6	-	-	6
400	16"	400.0	401.2	5.8	6.7	9.1	10.5	13.5	15.6	17.8	20.5	22.0	25.3	-	-	6

## DIMENSIONS OF SELFIT (SLOTTED) PVC-U PIPES

Nominal Outside Diameter in mm	Nominal Outside Diameter in inch	Mean Outside Diameter in mm		Wall Thickness in mm (t)										Standard Pipe Length in Meters
				Class 1 0.25 MPa		Class 2 0.4 MPa		Class 3 0.6 MPa		Class 4 0.8 MPa		Class 5 1.0 MPa		
		Min	Max	Min	Max	Min	Max	Min	Max	Min	Max	Min	Max	
75	2½"	75.0	75.3	-	-	-	-	2.6	3.1	-	-	-	-	6
110	4"	110.0	110.4	-	-	-	-	3.7	4.3	-	-	6.1	7.1	6
140	5"	140.0	140.5	-	-	-	-	4.8	5.5	-	-	-	-	6
160	6"	160.0	160.5	-	-	3.7	4.3	5.4	6.2	7.2	8.3	8.8	10.2	6
180	7"	180.0	180.6	-	-	-	-	6.1	7.1	-	-	-	-	6
200	8"	200.0	200.6	-	-	4.6	5.3	6.8	7.9	-	-	11.0	12.7	6
225	9"	225.0	225.7	-	-	-	-	7.6	8.8	-	-	-	-	6
250	10"	250.0	250.8	-	-	-	-	8.5	9.8	-	-	13.8	15.9	6
315	12"	315.0	316.0	-	-	-	-	10.7	12.4	-	-	-	-	6

Note :- These pipes can be made available with 1.5 mm & 2 mm slot width.

## AGRICULTURE FITTINGS AT A GLANCE

### SELFIT MOULDED (As per IS 7834)

Type of Fittings	Size in mm
COUPLER	20 to 160
ELBOW 90°	20 to 200
ELBOW 45°	20 to 200
TEE	20 to 200
TEE-BRASS INSERT	25 X 20
END CAP	20 to 200
END CAP - THREADED	40 to 110
MALE THREADED ADAPTER (M.T.A.)	20 to 160
FEMALE THREADED ADAPTER (F.T.A.)	20 to 160
FEMALE THREADED ADAPTER (F.T.A.) - BRASS INSERT	25 X 20
TAIL PIECE	63 to 200
REDUCER	25 to 200
REDUCING BUSH	25 to 200
REDUCING TEE	25 to 160
REDUCING ELBOW 90°	25 to 110
REDUCING ELBOW 90° - BRASS INSERT	25 X 20
REDUCING ELBOW 90° - THREADED	75 X 63
SINGLE Y	63 to 200
REDUCING SINGLE Y	160 to 200

### SELFIT MOULDED (As per ISO 1452)

Type of Fittings	Size in mm
ELBOW 90° - THREADED	20 to 90
COMPACT BALL VALVE	20 to 110
BUTTERFLY VALVE - GEAR TYPE	90 to 400
BUTTERFLY VALVE - HANDLE TYPE	63 to 200
FOOT VALVE	90

### SELFIT MOULDED

Type of Fittings	Size in mm
SERVICE SADDLE THREADED	63 to 200
SADDLE STRIP	75 to 110
FLANGE	75 to 110

### SELFIT FABRICATED (As per IS 10124)

Type of Fittings	Size in mm
BEND (22.5°, 30°, 45° & 90°)	25 to 400
PLUMBING BEND FAB - 90°	32 to 50
COUPLER	63 to 400
REPAIR COUPLER (R/R)	63 to 400
REDUCER	140 to 250
TAIL PIECE	200 to 400



AGRICULTURE  
PIPES

# AGRICULTURE MOULDED FITTINGS

As per IS 7834



## COUPLER

To join two lengths of pipes

Size in mm	Size in inch	Pressure Rating (Kg/CM <sup>2</sup> )
20	½"	10
25	¾"	10
32	1"	10
40	1¼"	10
50	1½"	10
63	2"	6,10
75	2½"	6,10
90	3"	6,10
110	4"	6,10
140	5"	6
160	6"	4,6



## ELBOW 45°

To give 45° turn to a pipeline

Size in mm	Size in inch	Pressure Rating (Kg/CM <sup>2</sup> )
20	½"	10
25	¾"	10
32	1"	10
40	1¼"	10
50	1½"	10
63	2"	6
75	2½"	6
90	3"	6
110	4"	6
200	8"	6



## ELBOW 90°

To give a 90° turn to a pipeline

Size in mm	Size in inch	Pressure Rating (Kg/CM <sup>2</sup> )
20	½"	10
25	¾"	10
32	1"	10
40	1¼"	10
50	1½"	10
63	2"	6,10
75	2½"	6,10
90	3"	6,10
110	4"	6,10
140	5"	6,10
160	6"	6,10
180	7"	6
200	8"	6,10



## TEE

To take a bypass or a service line from the main line

Size in mm	Size in inch	Pressure Rating (Kg/CM <sup>2</sup> )
20	½"	10
25	¾"	10
32	1"	10
40	1¼"	10
50	1½"	10
63	2"	6,10
75	2½"	6,10
90	3"	6,10
110	4"	6,10
140	5"	6,10
160	6"	6,10
180	7"	6
200	8"	6,10



## ELBOW 90° - THREADED As per ISO 1452

To give a 90° turn to a pipeline & to connect a male threaded pipe & accessories

Size in mm	Size in inch	Pressure Rating (Kg/CM <sup>2</sup> )
20	½"	10
25	¾"	10
32	1"	10
40	1¼"	10
50	1½"	10
63	2"	10
75	2½"	10
90	3"	10



## TEE - BRASS INSERT

To connect a male threaded CP/Metal fittings like taps, showers, and similar to a pipeline

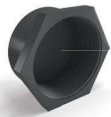
Size in mm	Size in inch
25X20	¾" x ½"



### END CAP

To plug the end of a pipeline

Size in mm	Size in inch	Pressure Rating (Kg/CM <sup>2</sup> )
20	½"	10
25	¾"	10
32	1"	10
40	1¼"	10
50	1½"	10
63	2"	10
75	2½"	6,10
90	3"	6,10
110	4"	6,10
140	5"	6,10
160	6"	6,10
180	7"	6
200	8"	6,10



### END CAP - THREADED

To plug the end of male threaded pipeline and accessories

Size in mm	Size in inch	Pressure Rating (Kg/CM <sup>2</sup> )
40	1¼"	10
50	1½"	10
63	2"	10
75	2½"	6
90	3"	6
110	4"	6



### MALE THREADED ADAPTER (M.T.A.)

To connect female threaded pipes and accessories

Size in mm	Size in inch	Pressure Rating (Kg/CM <sup>2</sup> )
20X20	½" x ½"	10
25X20	¾" x ½"	6
25X25	¾" x ¾"	10
32X32	1" x 1"	10
40X40	1¼" x 1¼"	10
50X50	1½" x 1½"	10
63X63	2" x 2"	6,10
75X63	2½" x 2"	6
75X75	2½" x 2½"	6,10
90X75	3" x 2½"	6
90X90	3" x 3"	6,10
110X110	4" x 4"	6,10
140X140	5" x 5"	6
160X160	6" x 6"	6



### FEMALE THREADED ADAPTER (F.T.A.)

To connect male threaded pipes and accessories

Size in mm	Size in inch	Pressure Rating (Kg/CM <sup>2</sup> )
20X20	½" x ½"	10
25X20	¾" x ½"	10
25X25	¾" x ¾"	10
32X20	1" x ½"	10
32X25	1" x ¾"	10
32X32	1" x 1"	10
40X40	1¼" x 1¼"	10
50X50	1½" x 1½"	10
63X50	2" x 1½"	6
63X63	2" x 2"	6,10
75X63	2½" x 2"	6
75X75	2½" x 2½"	6,10
90X63	3" x 2"	6
90X75	3" x 2½"	6
90X90	3" x 3"	6,10
110X75	4" x 2½"	6
110X90	4" x 3"	6
110X110	4" x 4"	6,10
140X140	5" x 5"	6
160X160	6" x 6"	6



### FEMALE THREADED ADAPTER (F.T.A.) - BRASS INSERT

To connect male threaded CP/Metal fittings like taps, showers, and similar to a pipeline

Size in mm	Size in inch
25X20	¾" x ½"



### TAIL PIECE

For accessories that are to be connected using either a flange or a spigot joint

Size in mm	Size in inch	Pressure Rating (Kg/CM <sup>2</sup> )
63	2"	6
75	2½"	6
90	3"	6
110	4"	6
140	5"	6
160	6"	6
180	7"	6
200	8"	6



### SERVICE SADDLE THREADED

To tap the main line into a small feeder line for domestic purposes. Also used for fixing air valves on the line

Size in mm	Size in inch	Pressure Rating (Kg/CM <sup>2</sup> )
63X20	2" x 1/2"	6
63X25	2" x 3/4"	6
63X32	2" x 1"	6
75X20	2 1/2" x 1/2"	6
75X25	2 1/2" x 3/4"	6
75X32	2 1/2" x 1"	6
90X20	3" x 1/2"	6
90X25	3" x 3/4"	6
90X32	3" x 1"	6
110X20	4" x 1/2"	6
110X25	4" x 3/4"	6
110X32	4" x 1"	6
140X20	5" x 1/2"	6
140X25	5" x 3/4"	6
140X32	5" x 1"	6
140X40	5" x 1 1/4"	6
140X50	5" x 1 1/2"	6
140X63	5" x 2"	6
160X20	6" x 1/2"	6
160X25	6" x 3/4"	6
160X32	6" x 1"	6
160X40	6" x 1 1/4"	6
160X50	6" x 1 1/2"	6
160X63	6" x 2"	6
180X20	7" x 1/2"	6
180X25	7" x 3/4"	6
180X32	7" x 1"	6
180X40	7" x 1 1/4"	6
180X50	7" x 1 1/2"	6
180X63	7" x 2"	6
180X75	7" x 2 1/2"	6
200X20	8" x 1/2"	6
200X25	8" x 3/4"	6
200X32	8" x 1"	6
200X40	8" x 1 1/4"	6
200X50	8" x 1 1/2"	6
200X63	8" x 2"	6
200X75	8" x 2 1/2"	6



### REDUCER

To connect a service line to the main line; after a tee has been installed

Size in mm	Size in inch	Pressure Rating (Kg/CM <sup>2</sup> )
25X20	3/4" x 1/2"	10
32X20	1" x 1/2"	6
32X25	1" x 3/4"	10
40X32	1 1/4" x 1"	10
50X32	1 1/2" x 1"	10
50X40	1 1/2" x 1 1/4"	10
63X32	2" x 1"	6
63X40	2" x 1 1/4"	6,10
63X50	2" x 1 1/2"	6
75X32	2 1/2" x 1"	6
75X40	2 1/2" x 1 1/4"	6
75X50	2 1/2" x 1 1/2"	6
75X63	2 1/2" x 2"	6
90X50	3" x 1 1/2"	6
90X63	3" x 2"	6
90X75	3" x 2 1/2"	6
110X63	4" x 2"	6
110X75	4" x 2 1/2"	6
110X90	4" x 3"	6
140X75	5" x 2 1/2"	6
140X90	5" x 3"	6
140X110	5" x 4"	6
160X90	6" x 3"	6
160X110	6" x 4"	6
160X140	6" x 5"	6
180X110	7" x 4"	6
180X160	7" x 6"	6
200X110	8" x 4"	6
200X140	8" x 5"	6



**AGRICULTURE  
FITTINGS**



### REDUCING BUSH

To reduce the internal diameter of a fitting

Size in mm	Size in inch	Pressure Rating (Kg/CM <sup>2</sup> )
25X20	¾" x ½"	10
32X25	1" x ¾"	10
40X32	1¼" x 1"	10
50X25	1½" x ¾"	10
50X32	1½" x 1"	10
50X40	1½" x 1¼"	10
63X40	2" x 1¼"	6
63X50	2" x 1½"	6
75X40	2½" x 1¼"	6
75X50	2½" x 1½"	10
75X63	2½" x 2"	6
90X63	3" x 2"	10
90X75	3" x 2½"	6
110X63	4" x 2"	6
110X75	4" x 2½"	6
110X90	4" x 3"	6
160X140	6" x 5"	6
180X140	7" x 5"	6
180X160	7" x 6"	6
200X110	8" x 4"	6
200X140	8" x 5"	6
200X160	8" x 6"	6
200X180	8" x 7"	6



### REDUCING TEE

To take a reducing bypass or a service line from the main line

Size in mm	Size in inch	Pressure Rating (Kg/CM <sup>2</sup> )
25X20	¾" x ½"	10
32X20	1" x ½"	10
32X25	1" x ¾"	10
40X20	1¼" x ½"	10
40X25	1¼" x ¾"	10
40X32	1¼" x 1"	10
50X20	1½" x ½"	10
50X25	1½" x ¾"	10
50X32	1½" x 1"	10
50X40	1½" x 1¼"	10
63X25	2" x ¾"	10
63X32	2" x 1"	10
63X50	2" x 1½"	6
75X40	2½" x 1¼"	6
75X50	2½" x 1½"	6
75X63	2½" x 2"	6
90X50	3" x 1½"	6
90X63	3" x 2"	6
90X75	3" x 2½"	6
110X63	4" x 2"	6
110X75	4" x 2½"	6
110X90	4" x 3"	6
140X90	5" x 3"	6
140X110	5" x 4"	6
160X110	6" x 4"	6
160X140	6" x 5"	6



### REDUCING ELBOW 90°

To give a reducing 90° turn to a pipeline

Size in mm	Size in inch	Pressure Rating (Kg/CM <sup>2</sup> )
25X20	¾" x ½"	10
110X63	4" X 2"	6
110X75	4" X 2½"	6
110X90	4" X 3"	6



### REDUCING ELBOW 90° - BRASS INSERT

To connect male threaded CP/Metal fittings like taps, showers, and similar to a pipeline

Size in mm	Size in inch
25X20	¾" x ½"



### REDUCING ELBOW 90° - THREADED

To give a reducing 90° turn to a pipeline and to connect male threaded pipes and accessories

Size in mm	Size in inch	Pressure Rating (Kg/CM <sup>2</sup> )
75X63	2½" x 2"	6



### SINGLE Y

To take an equal service line in a main pipe line at an angle of 45°

Size in mm	Size in inch	Pressure Rating (Kg/CM <sup>2</sup> )
63	2"	6
75	2½"	6
90	3"	6
110	4"	6
140	5"	6
160	6"	6
200	8"	6



### REDUCING SINGLE Y

To take a reducing service line in a main pipeline at an angle of 45°

Size in mm	Size in inch	Pressure Rating (Kg/CM <sup>2</sup> )
160X110	6"X4"	6
200X110	8"X4"	6
200X160	8"X6"	6



### SADDLE STRIP

To tap the main line into a small feeder line

Size in mm	Size in inch
75X40	2½" x 1¼"
75X50	2½" x 1½"
110X40	4" X 1¼"
110X50	4" X 1½"
110X75	4" X 2½"



## FLANGE

Used to provide temporary disassembly of a piping system. For accessories that are to be connected using either a flange or a spigot joint

Size in mm	Size in inch
75	2½"
90	3"
110	4"

## VALVES

(As per ISO 1452)



### COMPACT BALL VALVE

To control and regulate the flow of water

Size in mm	Size in inch
20	½"
25	¾"
32	1"
40	1¼"
50	1½"
63	2"
75	2½"
90	3"
110	4"



### BUTTERFLY VALVE - GEAR TYPE

To control and regulate the flow of water

Size in mm	Size in inch
90	3"
110	4"
125	4½"
160	6"
200	8"
250	10"
315	12"
400	16"



### BUTTERFLY VALVE - HANDLE TYPE

To control and regulate flow of the water

Size in mm	Size in inch
63	2"
75	2½"
90	3"
110	4"
125	4½"
160	6"
200	8"



## FOOT VALVE

To ensure trouble free flow of water in the desired direction

Size in mm	Size in inch
90	3"

## AGRICULTURE FABRICATED FITTINGS

(As per IS 10124)



### BEND (22.5°, 30°, 45° & 90°)

To give a required angle turn to a pipeline

Size in mm	Size in inch	Pressure Rating (Kg/CM <sup>2</sup> )	Angle
25	¾"	8	90°
40	1¼"	6	90°
50	1½"	6	90°
63	2"	4,6,10	45°,90°
75	2½"	4,6,10	45°,90°
90	3"	4,6,10	45°,90°
110	4"	4,6,10	45°,90°
140	5"	4,6,10	45°,90°
160	6"	4,6,10	45°,90°
180	7"	4,6	45°,90°
200	8"	4,6,10	22.5°,45°,90°
225	9"	4,6,10	22.5°,45°,90°
250	10"	4,6,10	45°,90°
280	11"	4,6,10	90°
315	12"	4,6	45°,90°
400	16"	4,6	30°,90°

### PLUMBING BEND FAB - 90°

Size in mm	Size in inch	Pressure Rating (Kg/CM <sup>2</sup> )
32	1"	15
40	1¼"	15
50	1½"	15

\* NOTE : Sizes 22.5°, 30° & 45° are manufactured only against confirmed order and schedule.



**COUPLER**  
To join two pipes

Size in mm	Size in inch	Pressure Rating (Kg/CM <sup>2</sup> )
63	2"	4,6,10
75	2½"	4,6,10
90	3"	4,6,10
110	4"	4,6,10
140	5"	4,6,10
160	6"	4,6,10
180	7"	4,6,10
200	8"	4,6,10
225	9"	4,6,10
250	10"	4,6,10
280	11"	6,10
315	12"	4,6,10
355	14"	4,6
400	16"	4,6



**REPAIR COUPLER (R/R)**  
To repair the damaged portion of a pipeline

Size in mm	Size in inch	Pressure Rating (Kg/CM <sup>2</sup> )
63	2"	4,6
75	2½"	4,6
90	3"	4,6,10
110	4"	4,6,10
140	5"	4,6
160	6"	4,6,10
200	8"	6,10
225	9"	6,10
250	10"	6
280	11"	6
315	12"	6,10
400	16"	6



**REDUCER**  
To reduce the main line size

Size in mm	Size in inch	Pressure Rating (Kg/CM <sup>2</sup> )
140X110	5" X 4"	6
200X160	8" X 6"	6
250X200	10" X 8"	6



**TAIL PIECE**  
For accessories that are to be connected by using a flange & spigot joints

Size in mm	Size in inch	Pressure Rating (Kg/CM <sup>2</sup> )
200	8"	6
250	10"	6
280	11"	6
315	12"	6
355	14"	6
400	16"	4,6

# FINOLEX SOLVENT CEMENT & LUBRICANT



**SOLVENT CEMENT**

PVC-U Solvent Cement for agriculture applications upto 110 mm (4") (As Per IS 14182)

Size	ml	100	250	500	1000	5000
Container		Tin	Tin	Tin	Tin	Can



**SOLVENT CEMENT**

PVC-U Solvent Cement for high diameter agriculture applications above 110 mm (4") (As Per IS 14182)

Size	ml	250	500	1000	5000
Container		Tin	Tin	Tin	Can



**LUBRICANT**

Rubber Lubricant used for installation of Ringfit pipes and fittings.

Size	gms	50	100	250	500	1000
Container			Plastic Container			

Outside diameter of pipe (mm)	Outside diameter of pipe (inches)	Approx No. of Joints/Ltr. of Finolex Solvent Cement
20	¾"	300
25	¾"	250
32	1	225
40	1 1/4"	175
50	1 1/2"	130
63	2"	125
75	2 1/2"	100
90	3"	75
110	4"	50
140	5"	35

Outside diameter of pipe (mm)	Outside diameter of pipe (inches)	Approx No. of Joints/Ltr. of Finolex Solvent Cement
160	6"	28
180	7"	25
200	8"	15
225	9"	12
250	10"	9
280	11"	7
315	12"	5
355	14"	3
400	16"	2

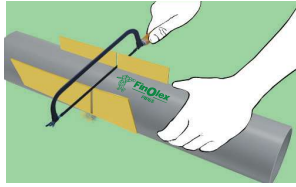
## JOINTING

### For Selfit Pipes & Fittings:

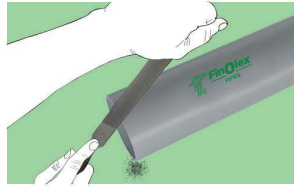
#### 1. Measuring



#### 2. Cutting



#### 3. Chamfering



#### 4. Cleaning



#### 5. Check Dry Fit



#### 6. Solvent cement application



#### 7. Assembly



## JOINTING

### For Ringfit Pipes

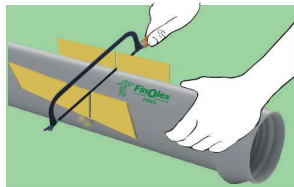
#### 1. Cleaning



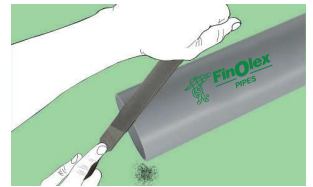
#### 2. Rubber Ring fitment



#### 3. Cutting



#### 4. Chamfering and cleaning



#### 5. Lubricant application



#### 6. Assembly



## CERTIFICATIONS AND APPROVALS

- Pipes conform to IS 4985 (Bureau of Indian Standards)
- Fittings manufactured as per IS 7834 & IS 10124 (Bureau of Indian Standards)
- Approved and tested by Central Institute of Plastics Engineering and Technology (CIPET)
- Approved and tested by SGS laboratory

# FEATURES AND BENEFITS

## SELFIT


-  Increased product life as these pipes are free from weaknesses caused by scaling, rusting, weathering and chemical action
-  Non-reactive to acids, alkalis, effluents, salt, and minerals
-  Smooth inner walls minimize frictional losses and scaling due to precipitation
-  Excellent flow characteristics
-  Substantial savings in labour costs due to reduced number of joints
-  Reduced inventory- as the use of couplers is eliminated
-  Selfit sockets are made with high precision on specially developed machines
-  Stringent quality control
-  Lower installation time and cost
-  Available in standard lengths of 3, 5 & 6 meters

## RINGFIT

-  All weather jointing
-  Pipelines can be tested and put to immediate use after jointing as there is no curing period required
-  Deflection of pipes due to soil shifting and/or land contour can be easily accommodated upto 2° per joint
-  Absorption of linear expansion and contraction by the rubber ring keeps the EPDM seal intact even in extreme temperature variation
-  Facilitates faster installation enabling immediate pressure testing and commissioning
-  Joints are stable, watertight and can resist loads from horizontal and vertical tractive forces
-  Leak-proof joints
-  Extended product life due to corrosion and rust resistance
-  Stringent quality control
-  Convenient and easy installation
-  Use of elastomeric sealing ring eliminates the requirements and precautions associated with quality and quantity of solvent cement

## APPLICATIONS

PVC-U pipes are used for efficient transportation of water in agriculture and allied applications such as:

-  Irrigation schemes
-  Potable water supply lines
-  Biogas plants
-  Main lines for sprinkler and drip irrigation
-  Rising main and distributing lines
-  Households

### Finolex Industries Limited

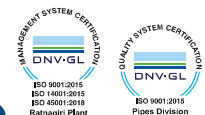
#### Registered Office:

Gat No. 399, Village Urse, Taluka Maval, District Pune - 410 506, Maharashtra, India.  
Tel. No. : 02114 - 237251 | E-mail: investors@finolexind.com  
CIN: L40108PN198PLC024153 | Website: www.finolexpipes.com

#### Corporate Office:

D1/10, MIDC, Chinchwad, Pune - 411 019, Maharashtra, India.  
Tel. No. : 020 - 27408200  
E-mail: care@finolexpipes.com

Follow us on:     



#### Disclaimer:

• Specifications are subject to change without prior notice. • The product images shown are for illustration purposes only and may not be an exact representation of the product. • The product images or other information cannot be construed as guarantee or suitability for a particular application. • Warranty applicable only for manufacturing defects when products are installed as per our standard guidelines and usage. • Warranty is not applicable if any other brand's products are used in combination with Finolex products. • In any case, the manufacturer/ seller's liability towards any claim is limited to replacement of, or credit for the defective product excluding any allied or incidental expenses. The manufacturing defect should be brought to notice within 24 months from manufacturing date.