



Introduction

Spray Bodies

Spray & Rotary Nozzles

Rotors

Valves

Controllers

Sensors & Meters

Central Control and Water Management

Drip Irrigation

Filtration

Drainage Products

Resources

## Controllers



### Water Saving Tips

- A Seasonal Adjust feature is available on all Rain Bird AC-powered controllers, allowing users to easily adjust irrigation schedules to changing seasonal landscape water requirements. The ESP-LX Series Controllers also feature an automated Monthly Seasonal Adjust feature to help save water through automatic adjustments every month of the year. LNK2 WiFi Module compatible controllers can be adjusted daily with the Automatic Seasonal Adjustment feature in the Rain Bird App.
- Water savings can also be optimized through daily irrigation schedule adjustments which fine-tune watering based on current weather. All ESP-LX series controllers can easily be upgraded to include smart weather-based/ET or soil moisture irrigation control capability by adding a local rain sensor or soil moisture sensor.
- All Rain Bird controllers simplify conservation through a variety of flexible programming features. With the touch of a button, the ESP-ME3 and ESP-TM2 can recall a previously saved “Contractor Default” irrigation program; the ESP-LX Series “Delayed Recall” feature automatically reverts to typical watering programs after a user-set time period.

NEW



NEW

Major Products	Works with IQ4	Wi-Fi READY	Wi-Fi READY	Wi-Fi READY	Works with IQ4	Works with IQ4		Bluetooth	
Primary Applications	ESP-LXIVM/PRO	RC2	ESP-TM2	ESP-ME3	LXME2/ PRO	ESP-LXD	ESP-9V	Digital Hose-End Timer	TBOS BT
Residential		•	•	•			•	•	•
Light Commercial	•		•	•	•	•	•	•	•
Commercial/Industrial	•				•	•			•
<b>Type of Controller</b>									
Battery Operated							•	•	•
Indoor Location	•	•	•	•	•	•		•	
Outdoor Location	•	•	•	•	•	•		•	
<b>Features</b>									
Stations (up to)	60/240	8	12	22	48	200	6	1	6
Programs (up to)	10/40	3	3	4	40	4	6	1	3
Station Timing (up to)	96 hr	6 hr	6 hr <sup>1</sup>	6 hr <sup>1</sup>	96 hr <sup>1</sup>	12 hr <sup>1</sup>	12 hr	6 hr	12 hr
Number of Starts per Program (up to)	8	4	4	6	10	8	6	2	8
Surge protection	•	•	•	•	•	•			
230VAC Option	•	•	•	•	•	•			
Master Valve/Pump Start	• <sup>2</sup>	•	•	•	• <sup>2</sup>	• <sup>2</sup>		Multi-station models only	
Water Budgeting	• <sup>4</sup>	•	•	•	• <sup>4</sup>	• <sup>4</sup>	•		•
Individual Program/Zone Shut-Off	•	•	•	•	•	•			
Rain Delay	•	•	•	•	•	•		•	
Mobile App Programmable		•	• <sup>7</sup>	•		•			•
Sensor Terminals, Status Indicator and Override	•	•	•	•	•	•	•		
Delay Between Stations (up to)	0 - 60 min.		9 hrs	9 hrs	0 - 60 min.	0 - 10 min.			
Flow Sensing	•			•	• <sup>5</sup>	•			
Simultaneous Multi-Station Operation	•				•	•			•
Cycle + Soak™	•	•		• <sup>6</sup>	•	•			
Overlapping Programs	•				•	•	•		
Manual On/Off	•	•	•	•	•	•	•	•	•
Remote Control Compatible	•	•	•	•	•	•			
Diagnostic Test	•				•	•			
Diagnostic Valve Circuit Breaker	•	•	•	•	•	•			
Out-of-Valve Box Programming									•
Submersible (up to)							3.3 ft (1 m)		3.3 ft (1 m)
Vandal/Tamper Resistant									•
Self-Cleaning Solenoid									•
Low Battery Indicator							•		•
Save / Restore Programs	•	•	•	•	•	•	•		•
Master Valve ON/OFF by Station	•	•	•	•	•	•			•
Total Run Time Calculator by Program	•		•	•	•	•		•	•
Bypass Rain Sensor by Station	•	•	•	•	•	•			
<b>Programming Schedule</b>									
7 Day-of-Week	•	•	•	•	•	•	•	•	•
1-7 Variable Cycle	•	•	•	•	•	•	•		•
1-31 Variable Cycle	•	•	•	•	•	•	•		•
Odd/Even Cycle	•	•	•	•	•	•	•	•	•
Odd 31st	•	•	•	•	•	•			•
365-Day Calendar	•	•	•	•	•	•	•	•	
Event Day Off	•				•	•			
<b>Central Control Compatibility</b>									
IQ™ Upgradeable	•				•	•			
<b>Cabinet</b>									
Plastic-Indoor		•	•	•					
Plastic-Outdoor	•	•	•	•	•	•	•		•
Powder-Coated Metal Outdoor	•				•	•			
Stainless Steel Pedestal	•				•	•			
Powder-Coated Metal Pedestal	•				•	•			
<b>Hardware/Accessories</b>									
Two-Wire Devices and Accessories	•					•			
Rain Sensing (need Rain Sensor)	•	•	•	•	•	•	•	•	•
Flow Sensing (need Flow Sensor)	•				LXME2 PRO Only	•			
SMRT-Y Soil Moisture Sensor		•	•	•					

<sup>1</sup> With water budgeting, timing can be extended <sup>2</sup> Programmable by station <sup>3</sup> 6 independent start times per zone <sup>4</sup> Selectable for each program and by month <sup>5</sup> With Flow Smart Module <sup>6</sup> IQ only <sup>7</sup> Only with LNK2 WiFi Module

## ESP-LXIVM and LXIVM Pro 2-Wire Controllers

NEW

60/240 Station Capable Two-Wire Commercial Controller

### Controller Features

- 60-station capability standard expandable to 240 stations with LXIVM Pro Panel
- Four available sensor inputs (one wired plus up to three on 2-Wire path) with override switch. Eight (Seven plus 1) for LX-IVM Pro
- Five flow sensors supported (LX-IVM), Ten for LX-IVM Pro
- Supported Field devices: IVM-SOL, IVM-OUT, IVM-SD, and IVM Smart Valves
- Supports IVM-SEN sensor devices (flow sensing and weather sensor support) and IVM-SD surge devices (one per 500 feet of two-wire path or every 15 devices required)
- Central Control capable with Rain Bird IQ Communications Cartridges and software (see pg. 102)
- Six user-selectable languages
- 10 independent programs (LX-IVM) or 40 Programs (LX-IVM Pro)
- Removable front panel is programmable under battery power
- Plastic, locking, UV resistant, wall-mount case, Optional Metal and Stainless Steel Case & Pedestal
- Compatible with Rain Bird Landscape Irrigation and Maintenance and Third Party Remotes
- Plastic, locking, UV resistant, wall-mount case, Optional Metal and Stainless Steel Case & Pedestal

### Operating Specifications

- Station timing: 0 min to 96 hrs
- Program level and global Monthly Seasonal Adjust; 0% to 300% (96 hrs maximum station run time)
- 8 start times per program
- Program Day Cycles include Custom days of the week, Odd, Odd no 31st, Even, and Cyclical dates
- Manual station, program, test program

### Diagnostic Features

- Alarm light with external case lens
- 2-Wire diagnostics to simplify and expedite troubleshooting
- External alarm port (0.1A max)
- Four isolated wire paths prevent full system failure under a single short
- 2-Wire Mapping: Maps the devices to corresponding wire paths in the controller to help quickly find and resolve issues
- Trending 12-month electrical history reports and proactive action
- Self-Healing: Automatically detect “fixes” to wire path and splice issues and re-start irrigation without reliance on manual intervention
- Two-Way Communication: with Integrated Valve Modules (IVM) communication happens both ways enabling key features
- Self-Shutoff: Once loss of power is detected, automatically shutoff valve to avoid leaks

### Certifications

- cULus, CE, IPX4, UL, CUL, CSA, C-Tick, FCC Part 15. For current certifications visit: [www.rainbird.com/esplxivm](http://www.rainbird.com/esplxivm)

Works with **iQ4**

Allows users to control/monitor 1 to 1000s of controllers from their computer or mobile device



ESP-LXIVM Controller

Controllers



## ESP-LXIVM and LXIVM Pro 2-Wire Controllers (cont.)

### Water Management Features

- Learn Flow utility and flow usage totalizer help optimize water usage
- FloWatch™ protection for high and low flow conditions set by the user FloManager™ manages hydraulic demand, make full use of available water to turn on as many stations as possible without exceeding water supply and reducing the total time to complete irrigation cycles.
- SimulStations™ allows stations to operate at the same time; up to 8 with LX-IVM and 16 with LXIVM Pro
- Cycle+Soak™ by station
- Rain Delay up to 30 days
- 365-Day Calendar Day Off (up to 5 days)
- Station Delay by program
- Normally Open or Normally Closed Master Valves programmable by station; up to 5 with LX-IVM and 10 with LX-IVM Pro
- Optional Weather Sensors are programmable by station to prevent or pause watering; up to 4 with LX-IVM and 8 with LX-IVM Pro
- Seasonal Adjust by Program or by Month

### Environmental

- Operating Temperature
  - Operating temperature range: 14°F to 149°F (-10°C to 65°C)
- Operating Humidity
  - Operating humidity range: 95% max at 40°F to 120°F (4°C to 49°C) in a non-condensing environment
- Storage Temperature
  - Storage temperature range: -40°F to 150°F (-40°C to 66°C)
- Upgrade Options
  - IQ-NCC Network Communication Cartridge
  - LXIVM Pro Panels (for regular 60 station controllers)

### Electrical Specifications

- Power Supply Voltage: 230 VAC ± 10%, 50Hz
- Power back-up: Lithium coin-cell battery maintains time and date while nonvolatile memory maintains the schedule
- Simultaneous operation of up to eight (IVM) or sixteen (IVM Pro) Stations plus any corresponding master valves

### Dimensions (W x H x D)

- 14.32" x 12.69" x 5.50" (36.4 x 32.2 x 14.0 cm)

### Model

- IESPLXIVM: International Version 230V
- IESPLXIVMP: International Version (Pro) 230V
- ILXIVMEU: European Version 230V
- ILXIVMPEU: European Version (Pro) 230V
- ILXIVMAU: Australian Version 230V
- ILXIVMPAU: Australian Version (Pro) 230V

### Accessories

- IVM Field Devices\* (see next page)
- Painted Metal and Stainless Steel Pedestal/Enclosure Options available
- IQ-NCC: Network Communication Cartridge for ESP-LX Series Controllers (see pg. 102)
- See page 90 for information on Rain Bird FS-Series Flow Sensors
- Pump Start Relays (PSR110-IVM or PSR220-IVM)

\* IVM Field devices include peel-off barcode address labels



LXMMSSPED Shown with ESP-LXIVM in LXMMSS Stainless Steel Cabinet

**Field Devices**

ESP-LXIVM 2-Wire Field Devices Field Devices are installed along the 2-Wire path to interface with valves and other hardware.

**IVM-SOL**

- Interfaces with LX-IVM to control station valves and master valves
- Interfaces with PEB, PESB, PGA, EFB-BP and BESP Valves
- Available pre-installed in a SmartValve configuration with PEB and PGA Valves
- Rain Bird WC20 connectors (included) to be used for all splices
- Current Draw: 0.67mA
- Model: LXIVMSOL

**IVM-OUT**

- Interfaces with LX-IVM to manage 3rd party valves (with latching solenoids) and external gear such as pump stations
- Rain Bird WC20 connectors (included) to be used for all splices
- Current Draw: 0.67mA
- Model: LXIVMOUT

**IVM-SEN**

- Interfaces with LX-IVM to control weather sensors or flow sensors
- Rain Bird WC20 connectors (included) to be used for all splices
- Current Draw: 6mA
- Model: LXIVMSEN

**IVM-SD (Surge Protection)**

- IVM-SD provides surge protection on the 2-Wire path
- One every 500ft or 15 field devices
- Rain Bird WC20 connectors to be used for all splices
- Model: LXIVMSD



IVM-SOL



IVM-OUT



IVM-SEN



IVM-SD

**Key Specifications**

Feature	LX-IVM	LX-IVM Pro
Max Programs	10	40
Stations	60	240
Max Simulstations	8	16 (plus active MV's)
Master Valves	5	10
Flow sensors	5	10
Weather sensors	4	8 (including 1 Local)
Watering windows	1 per program	
Max run time	96 hrs	
Start Times/program	8	
Interstation delay	Up to 1 hour per program	
LCD	2.5"x5" at 127x256 pixels. Monochrome with backlight	
Front Panel Buttons	- All Buttons are back-lit - 5 Programming Button - Dedicated Language, Info and Back Buttons	
Transformer size	1.9 amp (50 VA)	
IVM current draw	720 uA (Standby)	
Sensor current draw	8.4mA (Standby)	
Max wire run	1.65 miles (2.66Km) 14 AWG in Star configuration 6.61 miles (10.63Km) Looped	
No. 2-Wire paths and terminal pairs	4	
Cabinet	Plastic	
FloWatch (flow sensing)	YES - Available Options: Diagnose & Eliminate, Shut Down & Alarm, Alarm Only	
FloManager (flow optimization)	Yes	
Flow Rate	0 to 9999.9 gallons/min. (0.1 gallons/min. resolution)	
Supported Flow Sensors	FS050P, FS075P, FS100P, FS150P, FS200P, FS300P, FS400P, FS100B, FS150B, FS200B, FS350B, FS350SS, UFS100, UFS150, UFS200, Custom	
Surge	20 kV int. - 1 IVM-SD every 500 ft. (or 15 field devices)	
Valve type	DC Latching	
Diagnostics Short Finding	Automatically Detect and Turn Off Wire Path Ability to turn on constant current source for field trouble shooting	
Diagnostics Electrical History	- Daily Values (Last 30 Days) - Monthly Averages (Last 12 Mos.) - Values recorded 11:59 PM daily	
Diagnostics - Field Device Response	List Responding and List Not Responding	
Diagnostics Controller Output	Tracks Current Draw from 2-Wire Path 0.67 mA per IVM-SOL/IVM-OUT 6 mA per IVM-SEN	
Diagnostics Watering Test	Test All Stations 1 to 10 Mins. (per station)	
Central Control Capable	Yes	

Controllers

NEW

## LXME2/ PRO Controllers

Modular -Easily upgradeable with a Pro Smart Module for a second booster pump output and flow sensing capability. Quickly expand from 12 stations up to 48 stations using 12 station modules

Works with **iQ4**

Allows users to control/monitor 1 to 1000s of controllers from their computer or mobile device



LXME2/ PRO Controller

Controllers

### Controller Features

- Large LCD display with easy to navigate softkey user interface
- Hot-swappable modules, no need to power down the controller to add/remove modules
- Master valve/pump start circuit
- Second master valve/Booster Pump start circuit
- 6 user-selectable languages
- Program memory retention without power or battery in non-volatile memory
- Standard 10kV surge protection
- Front panel is removable and programmable under battery power

### Water Management Features

- Optional Pro Smart Module™ with Learn Flow utility and flow usage totalizer and second master valve port
- FloWatch™ protection for high and low flow conditions with user defined reactions
- FloManager™ manages hydraulic demand, making full use of available water to shorten total watering time
- SimulStations™ are programmable to allow up to 5 stations to operate at the same time
- Water Windows by program plus Manual MV Water Window
- Cycle+Soak™ by station
- Rain Delay
- 365-Day Calendar Day Off
- Programmable Station Delay by program
- Normally Open or Closed Master Valve programmable by station
- Weather Sensor programmable by station to prevent or pause watering
- Program Seasonal Adjust
- Global Monthly Seasonal Adjust

### Diagnostic Features

- Alarm light with external case lens
- External alarm port (0.3A max)
- Program summary and review
- RASTER™ station wiring test

### Operating Specifications

- Station run timing: up to 96 hrs continuous runtime
- Seasonal Adjust: 0% to 300% (16 hrs maximum station run time)
- 40 independent programs, programs can overlap
- 10 start times per program
- Program Day Cycles include: custom days of the week, odd, odd no 31st, even, and cyclical dates
- Manual station, program, test program

### Electrical Specifications

- Input required: 230 VAC  $\pm$  10%, 50Hz
- Output: 26.5 VAC 1.9A
- Power back-up: Lithium coin-cell battery maintains time and date while nonvolatile memory maintains the schedule
- Multi-valve capacity: Maximum five 24 VAC, 7 VA solenoid valves simultaneous operation including the master valve, maximum two solenoid valves per station module

### Certifications

- 230VAC models: CE, UKCA, ACMA RCM

### Dimensions

- Width: 36.4 cm
- Height: 32.2 cm
- Depth: 14.0 cm

### Environmental

- Operating temperature range: -10° C to 65° C
- Operating humidity range: 95% max at 4° C to 49° C in a non-condensing environment
- Storage temperature range: -40° C to 66° C

### Models

- IESPLXIVM: International Version 230V
- IESPLXIVMP: International Version (Pro) 230V
- ILXIVMAU: Australian Version 230V
- ILXIVMPAU: Australian Version (Pro) 230V

### Accessories

- Painted Metal and Stainless Steel Pedestal/Enclosure Options available
- IQ Communication Cartridge (see page 102)
- Rain Bird FS-Series Flow Sensors (see page 90)



LXME2/ PRO Modules



## ESP-LXD Decoder Controller

50 – 200 station capable Two-Wire Decoder Commercial Controller

### Controller Features

- 50-station capability standard expandable to 200 stations with optional ESPLXD-SM75 modules
- Four available sensor inputs (one wired plus up to three decoder-managed) with override switch
- Five flow sensors supported
- Supported decoders: FD-101TURF, FD-102TURF, FD-202TURF, FD-401TURF, FD-601TURF
- Supports SD-210TURF sensor decoders (flow sensing and weather sensor support) and LSP-1 line surge protectors (one per 500 feet of two-wire path required)
- Central Control capable with Rain Bird IQ Communications Cartridges and software (see pg. 102)
- Advanced Features From Cycle+Soak™ to Contractor Default Program™, the ESP-LXD offers innovative features proven to cut installation expenses, troubleshooting time and water use
- Six user-selectable languages
- Removable front panel is programmable under battery power
- Plastic, locking, UV resistant, wall-mount case, Optional Metal and Stainless Steel Case & Pedestal
- Compatible with Rain Bird Landscape Irrigation and Maintenance Remote - Flow Smart Module™ factory installed or field upgradable
- Plastic, locking, UV resistant, wall-mount case, Optional Metal and Stainless Steel Case & Pedestal

### Operating Specifications

- Station timing: 0 min to 12 hrs
- Program level and global Monthly Seasonal Adjust; 0% to 300% (16 hrs maximum station run time)
- 4 independent programs (ABCD); ABC programs stack, ABCD overlap
- 8 start times per program
- Program Day Cycles include Custom days of the week, Odd, Odd no 31st, Even, and Cyclical dates
- Manual station, program, test program

### Certifications

- cULus, WaterSense (when upgraded with ET Manager Cartridge), CE, IPX4, RCM, Smart Approved WaterMark. For current certifications visit: [www.rainbird.com/esplxd](http://www.rainbird.com/esplxd)

### Upgrade Options

- IQ-NCC Network Communication Cartridge
- ESP-LXD-SM75 75-station module



LXMMSSPED Shown  
with ESP-LXD in LXMMSS  
Stainless Steel Cabinet

### Electrical Specifications

- Power Supply Voltage: 120 VAC ± 10%, 60Hz (International models: 230 VAC ± 10%, 50Hz; Australian Models: 240 VAC ± 10%, 50Hz)
- Power back-up: Lithium coin-cell battery maintains time and date while nonvolatile memory maintains the schedule
- Multi-valve station capacity: up to 2 solenoid valves per station; simultaneous operation of up to eight solenoids and/or master valves

### Dimensions (W x H x D)

- 36.4 x 32.2 x 14.0 cm

### Model

- IESPLXD: 50-station for international markets, 230 VAC
- IESPLXDEU: 50-station for Europe, 230 VAC
- IESPLXDAU: 50-station for Australia, 240 VAC

### Accessories

- FD-TURF: two-wire decoders
- SD-211TURF : 2-Wire sensor decoder. Previously SD-210TURF (pre -2023)
- LSP1TURF: 2-wire line surge protection
- DPU-210: two-wire decoder programming unit
- Painted Metal and Stainless Steel Pedestal/Enclosure Options available
- IQ-NCC: Network Communication Cartridge for ESP-LX Series Controllers (see page 102)
- See page 90 for information on Rain Bird FS-Series Flow Sensors

<sup>1</sup>FD-TURF decoders include peel-off barcode address labels

<sup>2</sup>Barcode scanning pen not included – sold separately; Unitech MS100NRCB00-SG recommended ([www.ute.com](http://www.ute.com))

Works with IQ4



ESP-LXD Decoder  
Controller

## LNK2 WiFi Module NEW

Irrigation System Control from Anywhere

### Features

- Upgrades WiFi-ready controllers (ESP-ME3, ESP-Me and ESP-TM2) to make them fully accessible and programmable from iOS or Android compatible devices\*
- Operates like a wireless remote control for your irrigation system while onsite or an internet-based monitoring and control system when offsite
- Streamlines and simplifies initial irrigation timer setup and seasonal adjustment
- Instant access allows for real-time system management and timer settings
- Compatible professional app features allow for simple multi-site management and remote diagnostics by landscape professionals
- Built-in mobile notifications provide troubleshooting access, simplify service calls, and warn of freezing conditions when expected
- Automatic weather adjustments provide daily run time changes, saving up to 50% in water
- Superior programming capabilities that are designed to meet the most stringent water restrictions

### Specifications

- 2.4 GHz (only) WiFi router compatible with WEP and WPA security settings
- Compatible with iOS 8.0 and Android 6 (Marshmallow) or later mobile devices\*
- Operating Temperature: -10° C to 65°C
- Storage Temperature: -40°C to 66°C
- Operating Humidity: 95% max @ 10°C to 49°C non-condensing environment

### Electrical Specifications

- Input: 24VAC(RMS) 50/60Hz; 55mA max

### Certifications

- cULus, FCC Part 15c, ISED RSS-247, IFETEL, CE.  
For current certifications visit: [www.rainbird.com/connected](http://www.rainbird.com/connected)

### Dimensions

- Width: 2.87 cm
- Height: 4.65 cm
- Depth: 1.22 cm

### Model

- LNK2WIFI



LNK2 WiFi Module



Controllers



ESP-ME3, ESP-RZxe and ESP-TM2

## RC2 Controller

The Complete Smart Control Solution

### Features

#### Worry-Free System Install

- Schedule templates for easy configurations
- Quick pair technology
- Wireless access point for complete system access without WiFi
- Multi-Lingual to set-up in native language

#### Seamless Remote Management and Control

- WiFi connected for remote site management.
- With our free professional app you can use your phone like a wireless remote to water a single zone, all zones, or set a custom schedule
- Manage and monitor all irrigation events and warnings real-time

#### Smart and Responsible

- Weather data from local weather sources automatically adjust system run times on a daily basis. Your yard receives only the water it needs while saving up to 50% in water
- WaterSense certified with superior programming capabilities designed to meet the most stringent water restrictions

### Specifications

- 2.4 GHz (only) WiFi router compatible with WEP and WPA security settings
- Compatible with iOS 8.0 and Android 6 (Marshmallow) or later mobile devices
- Operating Temperature: -10°C to 65°C
- Storage Temperature: -40°C to 66°C
- Operating Humidity: 95% max @ 4°C to 49°C non-condensing environment
- Master Valve Control
- Pre-Installed Power Cord
- 8-Station Capacity
- 3 Programs, 4 Start times/program

### Electrical Specifications

- Input required: 230V~, 50-60Hz, 0.14A
- Output: 24V~, 50-60Hz, 1.0A Maximum

### Master Valve/Pump Start Relay

- External battery back-up not required. Nonvolatile memory permanently saves the current programming

### Regulatory Compliance

- 120V Models: UL, FCC, ISED
- 230V Models: CE, UKCA, ACMA RCM

### Dimensions

- Width: 20.1 cm
- Height: 20.0 cm
- Depth: 9.0 cm

### Models

- RC2-120V: 8-station 120VAC
- RC2-230V: 8-station 230VAC
- RC2-AUS: 8-station Australia

### Accessories

- WR2-RFC: Rain + Freeze Combo
- WR2-48: Rain + Freeze Combo with 48-hour hold
- RSD-BEx: Rain sensor w/ latching bracket, extension wire



RC2

## ESP-TM2 Series Controller

Simple, Flexible, and Reliable for Residential Applications

### Features

- Upgradeable for WiFi-based remote monitoring and control via iOS and Android mobile devices (with LNK2 WiFi Module sold separately).
- Internet-based weather information can be used to make daily adjustments to the irrigation schedule, saving up to 30% in water (with LNK2 WiFi Module sold separately).
- 4, 6, 8, and 12 station models to meet small or large residential irrigation needs
- Set Permanent Days Off per program to ensure watering never occurs on days when maintenance crews are on site (for Odd/Even/ Cyclic schedules)
- Easy to install indoors or outdoors
- Quick programming in just 3 steps for ease of setup
- 3 available programs with up to 4 start times for each program to meet the needs of varied landscapes
- One-touch manual watering capability for ease of use
- Large back-lit LCD display for improved visibility in low-light and direct sun conditions
- Contractor Default™ allows you to easily save and restore your custom schedule
- Delay Watering up to 14 days and automatically resume watering after the set delay has elapsed
- Bypass Rain Sensor for any station gives you the ability to customize which stations react to a rain sensor
- Seasonal Adjust by program allows you to easily reduce or increase watering by program

### Specifications

- Operating Temperature: Up to 65°C
- Storage Temperature: -40°C to 66°C
- Operating Humidity: 95% max @ 10°C to 49°C non-condensing environment

### Electrical Specifications

- Input required: 230 VAC @ 50/60 Hz; 120VAC (±10%) @ 60Hz
- Output: 1A at 24VAC
- Master Valve/Pump Start Relay
- External battery back-up not required. Nonvolatile memory permanently saves the current programming and a 10 year life lithium battery maintains the controllers time and date during power outages

### Certifications

- CE, IP24, RCM, IRAM, EAC, ICASA, CMAC, Kvalitet, UkrSEPRO. For current certifications visit: [www.rainbird.com/esptm2](http://www.rainbird.com/esptm2)

### Dimensions

- Width: 20.1 cm
- Height: 20.0 cm
- Depth: 9.0 cm

### Models

Select models shown. Review your regional price list for complete availability.

- TM2-4-230: 4 Station
- TM2-6-230: 6 Station
- TM2-8-230: 8 Station
- TM2-12-230: 12 Station
- TM2-4-AUS: 4 Station Australia
- TM2-6-AUS : 6 Station Australia
- TM2-8-AUS : 8 Station Australia
- TM2-12-AUS : 12 Station Australia

### Accessories

- LNK2WIFI: LNK2 WiFi Module for remote control and notification via iOS or Android device
- WR2 Series Wireless Rain + Freeze Sensors
- RSD Series Rain Sensors



ESP-TM2

## ESP-RZXe Series Controllers

The Rain Bird ESP-RZXe WiFi Compatible Series provides a contractor grade, fixed station irrigation controller for residential and light commercial applications. The ESP-RZXe Controller provides zone based set up that is easier to understand by untrained users. 4, 6 and 8 zone models are available.

### Applications

The ESP-RZXe provides flexible scheduling features that make the controller ideal for a wide variety of applications including residential and light-commercial irrigation systems.

### Features

#### Easy to Use

- The ESP-RZXe Controller was designed with ease of use in mind. Zone-based scheduling allows every valve to be scheduled independently; no more explaining “programs” to end users, virtually eliminating call-backs. The large LCD display shows all of the programming for each zone at the same time.
- Simple graphic based user interface is easy to explain and presents every controller feature at your fingertips.

#### Easy to Install

- The ESP-RZXe Controller requires only two mounting screws. A guide for ½” or ¾” conduit allows for professional installation of field wires into the cabinet.

#### Controller Hardware

- Plastic wall-mount case
- 2 x AAA batteries for time and date backup
- Wire nuts for outdoor models

#### Controller Features

- WiFi compatible with the Rain Bird LNK2 WiFi Module
- Large LCD display with easy to navigate user interface
- Weather Sensor input with software override
- Master valve/pump start circuit
- Non-Volatile (100-year) program memory
- Programmable under battery power

#### Scheduling Features

- Zone based scheduling, allows for independent schedules assigned to each zone. (Run times, Start Times and Watering Days are customizable by zone)
- Contractor Rapid Programming™ automatically copies the Start Times and Watering Days from zone 1 to all remaining zones at initial set up
- 6 independent Start Times per zone
- 4 Watering Days options by zone: Custom days of week, ODD calendar days, EVEN calendar days, Cyclic (every 1 – 14 days)
- Manually water ALL zones or SINGLE zone on demand

### Advanced Features

- Electronic diagnostic circuit breaker
- Contractor Rapid Programming™ and “Copy previous Zone” for faster initial set up
- Contractor Default™ Save / Restore
- Rain Sensor bypass
- Rain Sensor bypass by Zone
- Manual water single or all zones

### Operating Specifications

- Zone timing: 0 to 199 min
- Seasonal Adjust; -90% to +100%
- Independent schedule per zone
- 6 Start Times per zone
- Program Day Cycles include Custom days of the week, Odd, Even, & Cyclical dates

### Electrical Specifications

- Input required: 230 VAC ± 10%, 50Hz
- Power back-up: 2 x AAA batteries maintain time and date while nonvolatile memory maintains the programming

### Certifications

- CE, IRAM, IPX4, RCM.
- For current certifications visit: [www.rainbird.com/RZXe](http://www.rainbird.com/RZXe)

### Dimensions

INDOOR	OUTDOOR
• Width: 16.9 cm	• Width: 20.1 cm
• Height: 15.0 cm	• Height: 19.9 cm
• Depth: 3.9 cm	• Depth: 3.9 cm

### MODELS

- RZXe4i-230V Indoor, 4 stations
- RZXe6i-230V Indoor, 6 stations
- RZXe8i-230V Indoor, 8 stations
- RZXe4-230V Outdoor, 4 stations
- RZXe6-230V Outdoor, 6 stations
- RZXe8-230V Outdoor, 8 stations



Outdoor Model



ESP-RZXE Indoor Model



## ESP-ME3 Series Controllers

The industry's most flexible irrigation controller solution.  
Supports up to 22 stations

### Features

- Built-in flow-sensing capabilities
- Large back-lit LCD display for improved visibility in low-light and direct sun conditions
- Rain Sensor input with override capability
- Master valve/pump start circuit
- Non-Volatile (100 year) storage memory
- Remotely Programmable under 9V battery power (not included)
- Program based scheduling allows 4 individual programs with 6 independent start times per program for 24 total start times
- Watering schedule options: By days of week, ODD calendar days, EVEN calendar days, or Cyclic (every 1 – 30 days) Advanced Features
- Advanced diagnostics and short detection with LED alert
- Contractor Default™ Program Save/Restore saved program(s)
- Rain Sensor bypass by Station
- One Touch manual watering
- Delay Watering up to 14 days (applies only to stations not set to ignore Rain Sensor)
- Manual Watering option by program or station
- Seasonal Adjust applied to all programs or individual program
- Adjustable delay between valves (default set to 0)
- Master Valve on/off by station
- Upgradeable for WiFi-based remote monitoring and control via iOS and Android mobile devices (with LNK2 WiFi Module sold separately).
- Internet-based weather information can be used to make daily adjustments to the irrigation schedule, saving up to 30% in water (with LNK2 WiFi Module sold separately).

### Operating Specifications

- Station timing: 1 minute to 6 hours
- Seasonal Adjust: 5% to 200%
- Max operating temperature: 65°C

### Electrical Specifications

- Input Required: 230/240VAC  $\pm$  10%, 50/60Hz
- Master Valve/Pump Start Relay
- Operating Voltage: 24VAC 50/60Hz
- Max Coil Inrush: 11VA
- Max Coil Holding: 5VA
  - Idle/Off power draw 0.06 amps at 120VAC
- Power back-up not required. Nonvolatile memory permanently saves the current programming and a 10 year life lithium battery maintains the controllers time and date during power outages.

### Certifications

- CE, IRAM, IPX4, RCM, For current certifications visit:  
[www.rainbird.com/me3](http://www.rainbird.com/me3)

### Dimensions

- Width: 27.2 cm
- Height: 19.5 cm
- Depth: 11.2 cm

### Models

#### Controller Base Models:

- ESP4ME3EUR 4-Station indoor / outdoor for international markets except Australia
- ESP4ME3AUS 4-Station indoor / outdoor for Australia

#### Modules:

- ESP-SM3: 3-station extension module
- ESPSM6: 6-station extension module

#### Accessories

- LNK2WIFI: LNK2 WiFi Module for remote control and notification via iOS or Android device
- WR2: Wireless Rain + Freeze Sensors
- RSD Series Rain Sensors
- Wired flow sensors



ESP-ME3 Series Controller  
and Modules

## Digital Hose End Timer

Faucet attached Controller

### Applications

Automate your hose-end sprinklers, drip irrigation system or soaker hose for better scheduling consistency with this easy-to-use digital controller. Along with rugged dependability for season-long outdoor use, this professional grade controller offers sophisticated functions for worry-free watering convenience.

### Features

- Extra large readout screen and programming dial make it easy to set and review your watering schedules.
- In operation, the screen also displays program status such as next scheduled cycle and time remaining on a current cycle.
- Advanced features include programming up to two watering times per day on any day(s) of the week, plus “water now” and “cancel” buttons to override programs instantly when desired.
- Ideal for use with Rain Bird drip or any hose end sprinklers . Go automatic with your watering in any area of your yard: gardens, landscaping beds, newly seeded as well as established lawns.

### Specifications

- Digital settings allow tailoring schedules for greener results with less water
- Scheduled watering up to twice per day enables water to soak in, even on slopes or with clay soil
- Programming by day of week complies with watering restrictions
- Instant override buttons for Rain Delay (cancel watering) and Water Now (manual watering)
- Specific rain delay up to 96 hours can also be set without affecting the stored program
- Large screen lets you see all settings at a glance.
- Duration of watering time: 1 mn to 6h
- Number of station:1
- ¾" female threaded inlet ( BSP)
- ¾" male threaded outlet ( BSP)
- Intended for outdoor use with cold water only.
- Working water pressure: 1 bar (minimum) – 6 bar (maximum)
- Working temperature: Keep from freezing –maximum temperature : 43°
  - Mini Flow: 162 L/h
  - Max Flow: 2.2 m3/h
- Uses 2 x 1,5V AA alkaline batteries (not included)

### Certifications

- NOM-001-SCFI-1993, CE, RCM.

### Model

- 1ZEHTMR



Digital Hose End Timer



## ESP-9V Series

Battery-Operated Controller

### Features

#### Controller Features

- Waterproof case ensures long life, even when installed in a valve box
- Common programming features are easily accessed on one screen, making programming quick and easy
- Operates for approximately one full year using one 9-volt alkaline battery, or two years with two 9-volt alkaline batteries
- Large LCD display with easy to navigate user interface
- Sensor input with bypass override
- Mast valve/pump-start circuit (multi-zone units only)
- Non-volatile (100-year) program memory
- IP68 certified for protection against dust and water intrusion
- Plastic controller case has outstanding resistance to weather, yellowing and aging

#### Scheduling Features

- Dedicated manual watering button for easy operation
- Automatic zone-stacking ensures that only one valve irrigates at the same time. ESP-9V will automatically irrigate the lower number zone first if zones are scheduled to water at the same time
- Contractor Rapid Programming™ automatically copies the start times and watering days from zone 1 to all remaining zones at initial setup
- Run times, start times, and watering days are customizable by zone
- 6 start times per zone
- 4 watering day options per zone: Custom days of the week, Cyclic, and ODD or EVEN calendar days
- Delay watering (1 to 9 days)

#### Valve Compatibility

- Rain Bird K80920
- Hunter 458200
- Irritrol DCL
- Toro DCLS-P

#### Controller Dimensions

- Width: 13.59 cm
- Height: 10.26 cm
- Depth: 6.15 cm
- Weight: 907 g

#### LCD Screen Size

- Width: 5.72 cm
- Height: 3.18 cm

#### Optional Wall Mount Dimensions

- Width: 10.76 cm
- Height: 17.60 cm
- Depth: 4.99 cm
- Weight: 107 g

#### Certifications

- cULus. For current certifications visit: [www.rainbird.com/esp9v](http://www.rainbird.com/esp9v)

#### Models

- ESP9V1: 1-Zone ESP-9V Controller
- ESP9V2: 2-Zone ESP-9V Controller
- ESP9V4: 4-Zone ESP-9V Controller
- ESP9V6: 6-Zone ESP-9V Controller
- ESP9V1SOL: 1-Zone + 9V Solenoid



ESP-9V Series  
Battery-Operated Controller



Controllers

## TBOS-BT and TBOS-BTLT

Bluetooth Battery-Operated Controller.

Install anywhere. Program from a Smartphone.

### Features

#### Rain Bird Mobile App Features for TBOS BT

- Create, review and transmit irrigation programs
- Capability to set zones or programs to manually irrigate
- Basic programming includes 3 independent programs A,B and C, each with 8 start times per day
- Stations can be assigned to several programs with different watering run times
- Run time is from 1 minute to 12 hours in 1-minute increments
- Five watering day cycle modes (Custom, even, odd, odd-31, cyclical) selectable by program for maximum flexibility and watering
- Program and global Monthly Seasonal Adjust; 0% to 300% (1% increments)
- Delay watering from 1 to 14 days
- Built-in ID with naming capability. The control module and stations can be individually named.
- Optional passcode
- Permanently turn the controller off to prevent irrigation
- Battery indicator reports the status of the control module's battery
- Capability to clear the control module's irrigation program

#### Controller Features

- Operates for approximately one full year using one 9-volt alkaline battery
- Completely potted to obtain IP68 conformity
- Independent station operation allows sequential start times (with stacking in case of overlap) restriction compliance
- Master valve output on TBOS BT1, 2, 4, & 6 Control Modules
- No loss of irrigation program after a battery replacement

#### Valve Compatibility

- Rain Bird TBOS Potted Latching Solenoid (K80920)
  - DV, DVF, ASVF, PGA, PEB, PESB, EFB-CP, and BPES series
- Hunter 458200
- Irritrol DCL
- Toro DCLS-P

#### Certifications

- cULus, FCC Part 15b, ISSED RSS-247 Issue 2.0, CE, IP68, ICASA, CITC, ACMA, SUBTEL, SRRC, MIC, IFETEL, CRA, TRA.
- For current certifications visit: [www.rainbird.com/tbosbt](http://www.rainbird.com/tbosbt)

### TBOS-BT System Components

#### Rain Bird Mobile App Features for TBOS-BT and TBOS-BTLT

- Available for Android and IOS devices

#### TBOS-BT Models

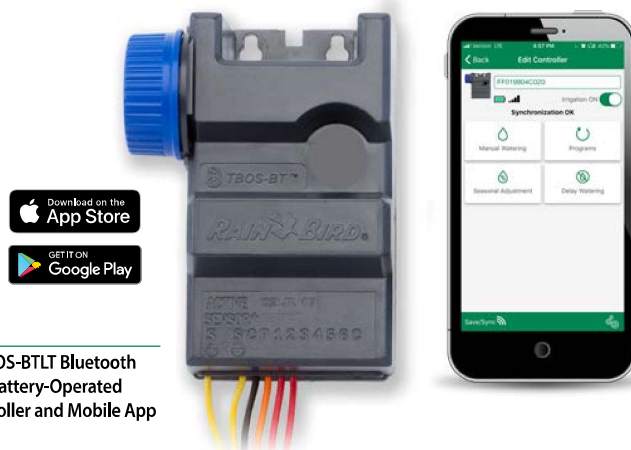
- TBOS-BT1: 1 Station, with Infrared Port (Available in Europe Only)
- TBOS-BT2: 2 Station, with Infrared Port (Available in Europe Only)
- TBOS-BT4: 4 Stations, with Infrared Port (Available in Europe Only)
- TBOS-BT6: 6 Stations, with Infrared Port (Available in Europe Only)

#### TBOS-BTLT Models

- TBOS-BT1LT: 1 Station, no Infrared Port
- TBOS-BT2LT: 2 Stations, no Infrared Port
- TBOS-BT4LT: 4 Stations, no Infrared Port
- TBOS-BT6LT: 6 Stations, no Infrared Port (Available in Europe Only)

#### Accessories

- K80920 TBOSPSOL: TBOS Potted Latching Solenoid
- RSDBEX: RSD Series Rain Sensors
- Adapter for Non-Rain Bird plastic valves
  - K80510 TBOSADAPP
- Adapter for Non-Rain Bird brass valves
  - K80610 TBOSADAPB



TBOS-BTLT Bluetooth Battery-Operated Controller and Mobile App





Introduction

Spray Bodies

Spray & Rotary Nozzles

Rotors

Valves

Controllers

Sensors & Meters

Central Control and Water Management

Drip Irrigation

Filtration

Drainage Products

Resources

## Sensors & Meters

Sensors & Meters Compatibility Matrix												
Accessory	Description	ESP9V	TBOSBT	RC2	ESPTM2	ESPME	ESPME3	ESPLXME2	ESPLXME2P	ESPLXD	ESPLXIVM	ESPLXIVMP
<b>Weather Sensors &amp; Stations</b>												
RSD-BEx	Wired Rain Sensor	•	•	•	•	•	•	•	•	•	•	•
WR2	Wireless Rain/Freeze Sensor			•	•	•	•	•	•	•	•	•
SMRT-Y	Soil Moisture Sensor				•	•	•	•	•	•	•	•
ANEMOMETER	Wind Speed Sensor							• <sup>1</sup>	• <sup>1</sup>	• <sup>1</sup>	• <sup>1</sup>	• <sup>1</sup>
<b>Flow Meters &amp; Sensors</b>												
FG100	1" PVC Flow Sensor					•	•	•	•	•	•	•
FS100P	1" PVC Tee Flow Sensor					•	•	•	•	•	•	•
FS150P	1½" PVC Tee Flow Sensor					•	•	•	•	•	•	•
FS200P	2" PVC Tee Flow Sensor					•	•	•	•	•	•	•
FS300P	3" PVC Tee Flow Sensor					•	•	•	•	•	•	•
FS400P	4" PVC Tee Flow Sensor					•	•	•	•	•	•	•
FS100B	1" Brass Tee Flow Sensor					•	•	•	•	•	•	•
FS150B	1½" Brass Tee Flow Sensor					•	•	•	•	•	•	•
FS200B	2" Brass Tee Flow Sensor					•	•	•	•	•	•	•
FSINSERT	Replacement insert for tee sensors					•	•	•	•	•	•	•
FS350B	Insert Flow Sensor					•	•	•	•	•	•	•
UFS100	1" Ultrasonic Flow Sensor					•	•	•	•	•	•	•
UFS150	1½" Ultrasonic Flow Sensor					•	•	•	•	•	•	•
UFS200	2" Ultrasonic Flow Sensor					•	•	•	•	•	•	•

<sup>1</sup> Requires PT5002 Pulse Transmitter



### Water Saving Tips

- Properties managed with a flow sensor averaged 35% savings. As part of a two-year study, historical water usage was compared on eight properties to water usage after a flow sensor was installed.
- By installing a Rain Bird flow sensor and a compatible flow-sensing controller, you can quickly identify leaks, shut down damaged areas and prevent costly flooding to your property. Plus, you can monitor your water efficiency over time.
- With cost-effective flow-sensing technology from Rain Bird, you can help avoid small leaks and big issues—building more trust and a stronger reputation for your business.