

# CONTROLLER

# SELECTION GUIDE

## Platform

## AC-Powered Controllers

### STANDARD

Details on [page 108](#)

Button and dial-based controllers are standalone systems that offer water-saving features and convenient remote control operation for faster maintenance.

**Eco Logic**  
Stations: 4, 6  
[page 110](#)



**X-Core™**  
Stations: 2, 4, 6, 8  
[page 111](#)



### HYDRAWISE™

Details on [page 112](#)

The Wi-Fi controller solution designed for contractors. The Hydrawise Irrigation Management Platform is simple to set up, easy to use, and packed with helpful remote irrigation management features. Built-in system monitoring and a suite of powerful tools make saving water and managing multiple sites easy.

**HC**  
Stations: 6, 12  
[page 112](#)



**X2™**  
Stations: 4, 6, 8, 14  
[page 117](#)



**X2 with WAND**  
Stations: 4, 6, 8, 14  
[page 118](#)



**Pro-HC**  
Stations: 6, 12, 24  
[page 119](#)



**HPC**  
Stations: 4 to 32  
[page 120](#)



**HCC**  
Stations: 8 to 54  
[page 121](#)



### CENTRALUS™

Details on [page 122](#)

Add cloud-based control and monitoring for Pro-C, ICC2, and ACC2 Controllers with the mobile-friendly Centralus Irrigation Management Platform.



**Pro-C™**  
Stations: 4 to 32  
[page 130](#)



**ICC2**  
Stations: 8 to 54  
[page 128](#)



**ACC2**  
Stations: 12 to 54 conventional, 1 to 225 with two-wire  
[page 126](#)



Use this guide to quickly compare Hunter controller power needs, station counts, and software platforms to ensure you choose the best controller for every installation.

## Platform

## Battery-Operated Controllers

### INDEPENDENT

Details on [page 133](#)

Battery-operated controllers allow automatic irrigation for power-restricted valve locations and areas where hardscape blocks the ability to run wire affordably.

**NODE**  
Stations: 1, 2, 4, 6  
page 135



**XC Hybrid**  
Stations: 6, 12  
page 137



### BLUETOOTH®

Details on [page 133](#)

Bluetooth-enabled, battery-operated controllers have all the benefits of independent battery controllers with convenient, on-site wireless control from a smartphone.

**BTT**  
Zones: 1, 2  
page 134



**NODE-BT**  
Stations: 1, 2, 4  
page 136



With the two-wire option, you can easily expand the system as needed after installation.

# STANDARD CONTROLLERS





Standard controllers are self-contained irrigation systems designed for quick installation and programming. Perfect for entry-level residential projects, these simple and affordable options provide standard irrigation capabilities for small landscapes.

## STANDARD CONTROLLER COMPARISON CHART

CONTROLLER MODELS	MAXIMUM STATIONS	SENSOR INPUTS	SMART ADJUSTMENT	REMOTE CONTROL	WEB ACCESS
ECO LOGIC	6	1	N/A	N/A	N/A
X-CORE™	8	1	Solar Sync™	ROAM, ROAM XL	N/A

# ECO LOGIC

The reliable Eco Logic Controller is the first choice for small residential areas and has the option for water-saving accessories.

## KEY BENEFITS

- Number of stations:
  - 4 or 6 (fixed models)
- 2 automatic programs with 4 start times each, with up to 4-hour run times per station
- QuickCheck™ Technology provides simple diagnostics of faulty field wiring
- Suspend irrigation up to 7 days during the off-season
- Short-circuit protection detects wiring faults and skips the station without system damage
- Seasonal adjustment for quicker schedule adjustments without changing run times

## OPERATING SPECIFICATIONS

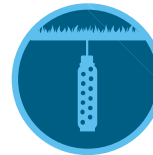
- Transformer input: 230 VAC
- Transformer output (24 VAC): 0.625 A
- Station output (24 VAC): 0.56 A
- P/MV output (24 VAC): 0.28 A
- Sensor inputs: 1
- Approvals: CE, UKCA, cUL
- Warranty period: 2 years

ECO LOGIC	
Model	Description
ELC-401i-E	4-station indoor controller, 230 VAC wall adapter
ELC-601i-E	6-station indoor controller, 230 VAC wall adapter



**Plastic Indoor**  
 Height: 12.6 cm  
 Width: 12.6 cm  
 Length: 3.2 cm

Compatible with:



**Soil-Clik™  
 Sensor**  
 Page 157



**Rain-Clik™  
 Sensor**  
 Page 154

# X-CORE™

Perfect for tract homes and entry-level residential systems, this simple and intuitive controller provides basic irrigation capabilities with convenient add-on options for smart watering adjustments and remote operation.

## KEY BENEFITS

- Number of stations:
  - 2, 4, 6, or 8 (fixed models)
- Separate indoor and outdoor models for a variety of installation environments
- 3 automatic programs with 4 start times per program, and up to 4-hour run times per station
- Add a Solar Sync™ Sensor to save water based on local weather conditions
- QuickCheck™ Technology provides simple diagnostics of faulty field wiring
- Hide Programs setting shows 1 program and 1 start time for simplification
- Short-circuit protection detects wiring faults and skips the station without system damage
- Easy Retrieve™ Memory backs up the full irrigation schedule
- Delay Between Stations accommodates for slow-closing valves or pump recharge
- Cycle and Soak prevents water waste and runoff in areas with elevation changes or tight soils
- Seasonal adjustment for quicker schedule adjustments without changing run times

## OPERATING SPECIFICATIONS

- Transformer input: 120 VAC or 230 VAC
- Transformer output (24 VAC): 1 A
- Station output (24 VAC): 0.56 A
- P/MV output (24 VAC): 0.28 A
- Sensor inputs: 1
- Approvals: Plastic IP54 (outdoor), UL, cUL, FCC, CE, UKCA, RCM, ISED
- Warranty period: 2 years

### X-CORE - SPECIFICATION BUILDER: ORDER 1 + 2 + 3 + 4

1	Model	2	Transformer	3	Indoor/Outdoor	4	Plug
	<b>XC-2</b> = 2-station (indoor only)		<b>00</b> = 120 VAC		<b>(blank)</b> = Outdoor model		<b>(blank)</b> = American plug
	<b>XC-4</b> = 4-station		<b>01</b> = 230 VAC		<b>i</b> = Indoor model		<b>E</b> = European connections, no plug
	<b>XC-6</b> = 6-station						<b>A</b> = Australian plug
	<b>XC-8</b> = 8-station						

#### Examples:

XC-801i-E = 8-station controller, 230 VAC European wall adapter, indoor  
 XC-801-A = 8-station controller, 230 VAC internal transformer, outdoor with Australian plug



#### Plastic Indoor

Height: 16.5 cm  
 Width: 14.6 cm  
 Depth: 5 cm



#### Plastic Outdoor

Height: 22 cm  
 Width: 17.8 cm  
 Depth: 9.5 cm

Compatible with:



**Solar Sync  
 Sensor**  
 Page 156



**ROAM Remote**  
 Page 146  
**ROAM XL Remote**  
 Page 147



**Soil-Clik  
 Sensor**  
 Page 157



#### Smart WaterMark

Recognised as a responsible water-saving tool when used with a Solar Sync Sensor



# HYDRAWISE™ CONTROLLERS



A healthy, beautiful garden needs just the right amount of water to thrive. The Hydrawise™ Irrigation Management Platform automatically adjusts watering based on your local weather. Choose from a complete lineup of Hydrawise-enabled controllers to maximise water and money savings in any setting.

## HYDRAWISE CONTROLLER COMPARISON CHART

CONTROLLER MODELS	MAXIMUM STATIONS	SENSOR INPUTS	TWO-WIRE	REMOTE CONTROL	WEB ACCESS	FLOW
HC	12	2	N/A	Hydrawise App	Hydrawise: Wi-Fi	HC Flow Meter (wired or wireless)
X2™	14	1	N/A	ROAM, ROAM XL, Hydrawise App	Hydrawise: Wi-Fi (WAND Module)	N/A
X2 with WAND	14	1	N/A	ROAM, ROAM XL, Hydrawise App	Hydrawise: Wi-Fi	N/A
PRO-HC	24	2	N/A	Hydrawise App	Hydrawise: Wi-Fi	HC Flow Meter (wired or wireless)
HPC	32	2	EZDS	ROAM, ROAM XL, Hydrawise App	Hydrawise: Wi-Fi	HC Flow Meter (wired or wireless)
HCC	54	2	EZDS	ROAM, ROAM XL, Hydrawise App	Hydrawise: Wi-Fi	HC Flow Meter (wired or wireless)

# HYDRAWISE™ SOFTWARE

As the industry's best Wi-Fi control solution, the Hydrawise Irrigation Management Platform allows for professional multi-site management and provides a range of helpful water-saving features for end users.



## Save Water

### PREDICTIVE WATERING™ TECHNOLOGY

Predictive Watering Technology uses past, current, and forecast weather data sourced from the internet to automatically adjust to local, real-time conditions and provide homeowners and end users with tremendous water savings.

### VIRTUAL SOLAR SYNC™ SENSOR

Virtual Solar Sync uses daily ET measurements from your selected weather stations to supplement the Predictive Watering adjustments on your controller, working to save even more water.



## Protect the Landscape

### SYSTEM MONITORING

Flow rate and valve monitoring alert you in the event of a problem, so you can quickly prevent landscape degradation before significant damage occurs.

### WEATHER MONITORING

Web-based climate monitoring automatically adjusts irrigation systems to local weather conditions, ensuring plants remain healthy — rain or shine.



## Save Time and Labour

### REMOTE MANAGEMENT

Make changes to a program and know the status of the controller and the irrigation plan without a site visit.

### STORE CUSTOMER PLANS AND DESIGNS

Attach irrigation system layouts to your customers' controllers for quick reference in the field. Never forget the location of the pipes or valve boxes again.

### ON-SITE REMOTE

Turn your smartphone into a remote control to make changes and check the irrigation system without visiting the controller.

All trademarks are property of their respective owners.



## Build a Stronger Business

### BUILD A STRONGER BUSINESS

Add services, grow revenue, increase customer satisfaction, and rest assured that Hydrawise has your back as you expand your business.

### BUSINESS BRANDING

Gain instant recognition from your customers by including your business logo and details in your Hydrawise account.

### MULTI-SITE MANAGER

Manage customers or multiple sites with our unique business tools.

- Summary of all controllers
- List view of customers/sites
- Search for customers and controllers
- View all controller events and logs
- View all controller alerts
- Branded automatic email reporting to customers
- Global control settings
  - Alerts
  - Watering Schedules
  - Start Times
  - Watering Triggers
- Quick select controllers
- Generate job sheets
- Manage subcontractors or regions

### BUSINESS ACCOUNT

Manage staff access with different levels of permission. Remove or add staff easily and quickly. Add and store files, irrigation plans, layouts, or other documents for access by your staff.

### MESSAGING

Receive messages from and send messages to customers and staff through the Hydrawise App.



## Manage from Anywhere

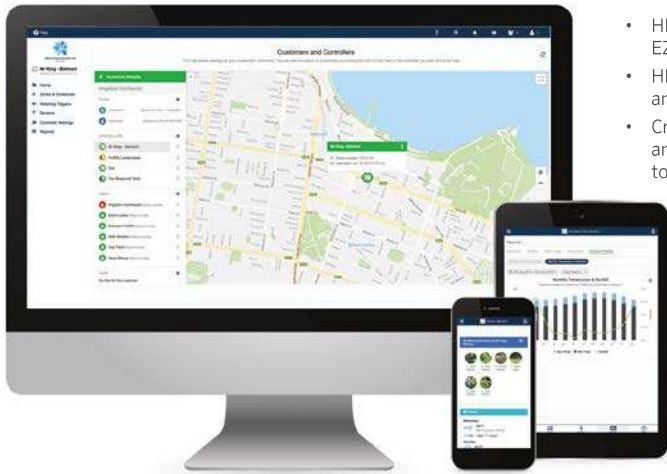
### GLOBAL APP AND WEB ACCESS

With Hydrawise, everything you need is in the palm of your hand. Remote access allows you to view, manage, and monitor irrigation controllers from your smartphone, tablet, or computer at your convenience.

### SMART-HOME COMPATIBILITY

Hydrawise integrates seamlessly with Amazon Alexa™, Control4®, and HomeSeer™.

What's New with Hydrawise



- HPC Controller now compatible with the EZ Decoder System up to 32 stations
- HPC Controller now has 2 sensor ports for any Clik sensor and HC Flow Meter
- Create custom reports for water savings and forecasts; automatically email them to your customers
- WAND Module for X2™ Controllers provides super-fast Bluetooth remote, Wi-Fi setup, and a convenient copy-paste function
- Controller touchscreen enhancements



Access to Hydrawise Software is free for all users worldwide.  
To learn more, visit [hydrawise.com](http://hydrawise.com).

**Smart WaterMark**  
Recognised as a responsible water-saving tool



**HC Controller**  
6- and 12-station count



**X2 Controller with WAND Module**  
4-, 6-, 8-, and 14-station count



**Pro-HC Controller**  
6-, 12-, and 24-station count



**HPC Controller**  
4- to 32-station count, EZDS two-wire option



**HCC Controller**  
8- to 54-station count, EZDS two-wire option



**HC Flow Meter**  
Add an optional flow meter to receive flow alerts and monitor water consumption  
*Not available for X2 Controller*

# HC

The cost-effective solution for residential projects, the HC Controller provides smart water savings and remote irrigation management capabilities.

## KEY BENEFITS

- Number of stations:
  - 6 or 12 (fixed models)
- Standard programming option allows for 6 independent irrigation programs and 6 start times per program
- Advanced programming option provides station-based programming with up to 6 total start times available
- 2 sensor inputs available for use with any Klik Sensors and HC Flow Meter
- Station outputs can also be used to activate a pump start relay or master valve
- Wi-Fi enabled for quick connection to Hydrawise Software
- 7 cm full-colour touchscreen display for simple programming at the control panel
- Built-in milliamp sensor for wire fault detection and alerts (12-zone models)

## OPERATING SPECIFICATIONS

- Transformer input: 230 VAC
- Transformer output (24 VAC): 1 A
- Station output (24 VAC): 0.56 A
- P/MV output (24 VAC): 0.28 A
- 2.4 GHz (only) Wi-Fi router compatible, 802.11 b/g/n 20 MHz
- Supported security protocols: WPA/WPA2 Personal (only), TLS, SSL
- Approvals: UL, cUL, FCC, CE, UKCA, RCM, ISED
- Warranty period: 2 years

## USER-INSTALLED OPTIONS

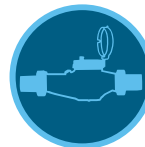
- Wireless HC Flow Meter option permits wireless flow monitoring for Hydrawise-enabled systems

Try Hydrawise Software today at [hydrawise.com](http://hydrawise.com).



**HC**  
(plastic indoor)  
Height: 15.2 cm  
Width: 17.8 cm  
Depth: 3.3 cm

Compatible with:



**HC Flow Meter**  
Page 158



**Soil-Clik Sensor**  
Page 157



**Rain-Clik Sensor**  
Page 154

HC	
Model	Description
HC-601i-E	Fixed 6-station, plastic indoor wall mount, 230 VAC European wall adapter
HC-1201i-E	Fixed 12-station, plastic indoor wall mount, 230 VAC European wall adapter



**Smart WaterMark**  
Recognised as a responsible water-saving tool

This online-capable controller offers Rapid Programming™ Technology and advanced water-saving features.

## KEY BENEFITS

- Number of stations:
  - 4, 6, 8, or 14 (fixed models)
- Wi-Fi capable controller automatically managed by Hydrowise™ Software
- Backlit display provides optimal visibility in any light
- 3 flexible programs with 4 start times each and up to 6-hour run times
- QuickCheck™ Technology provides simple diagnostics of faulty field wiring
- Hide Programs option shows one program and one start time for simplification
- Suspend irrigation for up to 99 days during the off-season
- Short-circuit protection detects wiring faults and skips the station without system damage
- Easy Retrieve™ Memory backs up the full irrigation schedule
- Delay Between Stations for slow-closing valves or pump recharge
- Cycle and Soak prevents water waste and runoff in areas with elevation changes or tight soils
- Seasonal adjustment for quicker schedule updates without changing run times

## OPERATING SPECIFICATIONS

- Transformer input: 120 VAC or 230 VAC
- Transformer output (24 VAC): 1 A
- Station output (24 VAC): 0.56 A
- P/MV output (24 VAC): 0.28 A
- Sensor inputs: 1
- Approvals (controller): Plastic IP55 (outdoor), UL, cUL, FCC, CE, UKCA, RCM, ISED
- Warranty period: 2 years



**X2**  
Height: 23 cm  
Width: 19 cm  
Depth: 10 cm

Compatible with:



**Hydrowise Software**  
Page 114



**ROAM Remote**  
Page 146  
**ROAM XL Remote**  
Page 147



**Rain-Clik™ Sensor**  
Page 154

X2 - SPECIFICATION BUILDER: ORDER 1 + 2 + 3		
1 Model	2 Transformer	3 Plug
<b>X2-4</b> = 4-station	<b>00</b> = 120 VAC	<b>(blank)</b> = U.S. plug <b>E</b> = European connections, no plug <b>A</b> = Australian plug
<b>X2-6</b> = 6-station	<b>01</b> = 230 VAC	
<b>X2-8</b> = 8-station		
<b>X2-14</b> = 14-station		

**Examples:**

- X2-1401-E = 14-station controller, 230 VAC internal transformer with no plug
- X2-1401-A = 14-station controller, 230 VAC internal transformer with Australian plug



**Smart WaterMark**

Recognised as a responsible water-saving tool when used with the WAND Module

The Bluetooth® word mark and logos are registered trademarks owned by Bluetooth SIG Inc., and any use of such marks by Hunter Industries is under licence. Amazon Alexa is a trademark of Amazon.com Inc. or its affiliates. Control4 is a registered trademark of Control4 Corporation in the United States and/or other countries. HomeSeer is a trademark of HomeSeer Technologies LLC.

# WAND FOR X2™

This Wi-Fi upgrade option equips X2 Controllers with remote management capabilities from anywhere with an internet connection.

Try Hydrawise Software today at [hydrawise.com](http://hydrawise.com).

## KEY BENEFITS

- Simple Wi-Fi plug-in enables remote irrigation management with any X2 Controller
- WAND Technology provides easy online irrigation management with controller status and faulty wiring alerts
- Standard programming allows for 3 independent programs featuring 6 start times each and 24-hour maximum run times
- Rapid Programming™ Technology lets you send preprogrammed schedules to any X2 Controller in seconds, so you get jobs done quicker
- Predictive Watering™ Technology provides precise weather adjustments for maximum water savings
- Compatibility with Amazon Alexa™, Control4®, and HomeSeer™ home automation technology enables simple, centralised voice control of the irrigation system
- Bluetooth Wi-Fi setup or WPS push-button connection makes it easy to connect to a wireless network
- WAND Module sold separately from X2 Controller

## OPERATING SPECIFICATIONS

- Flexible setup options: Bluetooth® Wi-Fi tether, Wi-Fi direct, or WPS push-button connection
- Bluetooth 5.0
- 2.4 GHz (only) Wi-Fi router compatible, 802.11 b/g/n 20 MHz
- Supported security protocols: WPA/WPA2 Personal (only), TLS
- Approvals: UL, cUL, FCC, CE, UKCA, RCM, ISED
- Warranty period: 2 years



### WAND Module with Bluetooth and Wi-Fi Capability

Height: 2 cm  
Width: 5 cm  
Depth: 5 cm



### WAND Module installed in X2 Controller

## WAND MODULE

Model	Description
WAND	Bluetooth and Wi-Fi Module for Hydrawise Irrigation Management Platform
X2	See page 117 for model chart

## WAND INSTALLATION



## Compatible with:



**X2 Controller**  
Page 117



**ROAM Remote**  
Page 146  
**ROAM XL Remote**  
Page 147



**Rain-Clik™ Sensor**  
Page 154



### Smart WaterMark

Recognised as a responsible water-saving tool

The Bluetooth® word mark and logos are registered trademarks owned by Bluetooth SIG Inc., and any use of such marks by Hunter Industries is under licence. Amazon Alexa is a trademark of Amazon.com Inc. or its affiliates. Control4 is a registered trademark of Control4 Corporation in the United States and/or other countries. HomeSeer is a trademark of HomeSeer Technologies LLC.

# PRO-HC

Use this rugged, cost-effective, professional-grade Wi-Fi controller for residential and light commercial applications.

## KEY BENEFITS

- Number of stations:
  - 6, 12, or 24 (fixed models)
- Standard programming option allows for 6 independent irrigation programs and 6 start times per program
- Advanced programming option provides station-based programming with up to 6 total start times available
- 2 sensor inputs available for use with any Klik Sensor and HC Flow Meter
- 1 P/MV output for pump start relay and master valve activation
- Wi-Fi enabled for quick connection to Hydrowise™ Software
- 7 cm full-colour touchscreen display for simple programming at the control panel
- Built-in milliamp sensor for wire fault detection and alerts

## OPERATING SPECIFICATIONS

- Transformer input: 120 VAC or 230 VAC
- Transformer output (24 VAC): 1 A
- Station output (24 VAC): 0.56 A
- P/MV output (24 VAC): 0.28 A
- 2.4 GHz (only) Wi-Fi router compatible, 802.11 b/g/n 20 MHz
- Supported security protocols: WPA/WPA2 Personal (only), TLS
- Approvals: IP44 (outdoor), UL, cUL, FCC, CE, UKCA, RCM, ISED
- Warranty period: 2 years

## USER-INSTALLED OPTIONS

- Wireless HC Flow Meter option permits wireless flow monitoring for Hydrowise-enabled systems

Try Hydrowise Software today at [hydrowise.com](http://hydrowise.com).



**Pro-HC**  
(indoor/outdoor)  
Height: 22.8 cm  
Width: 25 cm  
Depth: 10 cm

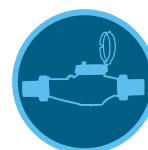
PRO-HC - SPECIFICATION BUILDER: ORDER 1 + 2 + 3		
1 Model	2 Transformer	3 Options
<b>PHC-6</b> = 6-station controller	<b>00</b> = 120 VAC	<b>(blank)</b> = U.S. cable and plug
<b>PHC-12</b> = 12-station controller	<b>01</b> = 230 VAC	<b>E</b> = 230 VAC with European cable and plug
<b>PHC-24</b> = 24-station controller		<b>A</b> = 230 VAC with Australian cable and plug

Example:

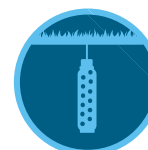
**PHC-2400** = 24-station, plastic wall mount cabinet, 120 VAC with U.S. cable and plug

**PHC-1201-E** = 12-station, plastic wall mount cabinet, 230 VAC with European cable and plug

Compatible with:



**HC Flow Meter**  
Page 158



**Soil-Clik™ Sensor**  
Page 157



**Rain-Clik™ Sensor**  
Page 154



**Smart WaterMark**  
Recognised as a responsible water-saving tool

# HPC

This smart and flexible control solution combines the modularity of the popular Pro-C™ Controller with the power of Hydrowise™ Software.

Try Hydrowise Software today at [hydrowise.com](http://hydrowise.com).

## KEY BENEFITS

- Number of stations:
  - Conventional wiring from 4 to 23 stations
  - Hybrid EZ Decoder System option up to 32 total stations (28 stations maximum if two-wire only)
- Standard programming option allows for 6 independent irrigation programs and 6 start times per program
- Advanced programming option provides station-based programming with up to 6 total start times available
- 2 sensor inputs available for use with any Klik Sensor and HC Flow Meter
- 1 P/MV output for pump start relay and master valve activation
- Wi-Fi enabled for quick connection to Hydrowise Software
- 7 cm full-colour touchscreen display for simple programming at the control panel
- Built-in milliamp sensor for wire fault detection and alerts

## OPERATING SPECIFICATIONS

- Transformer input: 120 or 230 VAC
- Transformer output (24 VAC): 1 A
- Station output (24 VAC): 0.56 A
- P/MV output (24 VAC): 0.28 A
- 2.4 GHz (only) Wi-Fi router compatible, 802.11 b/g/n 20 MHz
- Supported security protocols: WPA/WPA2 Personal (only), TLS
- Approvals: IP44 (outdoor), UL, cUL, FCC, CE, UKCA, RCM, ISED
- Warranty period: 2 years

## USER-INSTALLED OPTIONS

- Wireless HC Flow Meter option permits wireless flow monitoring for Hydrowise enabled systems

HPC	
Model	Description
HPC-400	4-station base model, plastic wall mount cabinet, 120 VAC with U.S. cable and plug
HPC-401-E	4-station base model, plastic wall mount cabinet, 230 VAC with European cable and plug
HPC-401-A	4-station base model, plastic wall mount cabinet, 230 VAC with Australian cable and plug
HPC-FP	Hydrowise retrofit face panel for Pro-C Controllers (March 2014 or newer models)

PC-SERIES STATION EXPANSION	
Model	Description
PCM-300	3-station plug-in module
PCM-900	9-station plug-in module
PCM-1600	16-station plug-in module
PC-DM	EZ Decoder output module

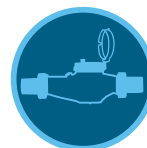


**HPC**  
(plastic indoor/outdoor)  
Height: 22.9 cm  
Width: 25.4 cm  
Depth: 11.4 cm



**HPC Face Panel**

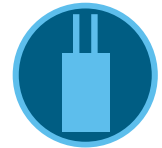
Compatible with:



**HC Flow Meter**  
Page 158



**ROAM Remote**  
Page 146  
**ROAM XL Remote**  
Page 147



**EZ Decoder System**  
Page 142



**Smart WaterMark**  
Recognised as a responsible water-saving tool

# HCC

Bring the power of Hydrawise™ Software to residential, commercial, and public-sector projects with this affordable powerhouse.

Try Hydrawise Software today at [hydrawise.com](http://hydrawise.com).

## KEY BENEFITS

- Number of stations:
  - Conventional: 8 to 38 (plastic), 8 to 54 (metal and pedestals)
  - With two-wire EZDS: up to 54 (all enclosure options)
- Any 2 programs or stations can operate simultaneously to improve irrigation efficiency
- 2 sensor inputs available for use with any Klik Sensors and HC Flow Meter
- 1 P/MV output for pump start relay and master valve activation
- 8 cm full-colour touchscreen display for simple programming at the control panel
- Built-in milliamp sensor for wire fault detection and alerts

## OPERATING SPECIFICATIONS

- Transformer input: 120/230 VAC
- Transformer output (24 VAC): 1.4 A
- Station output (24 VAC): 0.56 A
- P/MV output (24 VAC): 0.56 A
- Run a maximum of 4 Hunter solenoids 1.04 A at once
- 2.4 GHz (only) Wi-Fi router compatible, 802.11 b/g/n 20 MHz
- Supported security protocols: WPA/WPA2 Personal (only), TLS
- Approvals: Plastic Wall Mount IP55 (outdoor), Plastic Pedestal IP24, Metal wall-mounted enclosure IP55 (outdoor), Metal Pedestal IP55 (outdoor), UL, cUL, FCC, CE, UKCA, RCM, ISED
- Warranty period: 2 years

## USER-INSTALLED OPTIONS

- Wireless HC Flow Meter option permits wireless flow monitoring for Hydrawise enabled systems
- Compatible with ROAM Remote and ROAM XL Remote; see pages 146 and 147

HCC	
Model	Description
HCC-800-PL	8-station base model, plastic outdoor, wall mount
HCC-800-M	8-station base model, grey metal outdoor, wall mount
HCC-800-SS	8-station base model, stainless steel, wall mount
HCC-800-PP	8-station base model, plastic pedestal
HCC-FPUP	Retrofit upgrade kit for ICC and ICC2 Controllers
ICC-PED	Grey pedestal for metal wall mount cabinet
ICC-PED-SS	Stainless steel pedestal for stainless steel wall mount
ICC-PWB	Optional pedestal wiring board for metal pedestals
ANT-EXT-KIT	Universal antenna extension kit

## HCC SERIES STATION EXPANSION

Model	Description
ICM-400	4-station plug-in module with enhanced surge protection
ICM-800	8-station plug-in module with enhanced surge protection
ICM-2200	22-station expansion module (maximum one per controller)
EZDS	See page 142 for model chart



**Plastic**  
Height: 30.5 cm  
Width: 35 cm  
Depth: 12.7 cm

**Metal**  
(grey or stainless)  
Height: 40.6 cm  
Width: 33 cm  
Depth: 12.7 cm

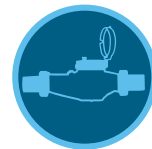


**Metal Pedestal**  
(metal/stainless)  
Height: 91.4 cm  
Width: 29.2 cm  
Depth: 12.7 cm



**Plastic Pedestal**  
Height: 99 cm  
Width: 61 cm  
Depth: 43 cm

Compatible with:



**HC Flow Meter**  
Page 158



**EZ Decoder System**  
Page 142



**Rain-Klik™ Sensor**  
Page 154



**Smart WaterMark**  
Recognised as a responsible water-saving tool



# CENTRALUS™ CONTROLLERS



Manage large, complex systems from your fingertips with the cloud-based Centralus Irrigation Management Platform. Simple plug-in communication modules provide powerful internet connectivity and mobile control for Hunter's commercial-grade ACC2, ICC2, and Pro-C™ Controllers.

## CENTRALUS CONTROLLER COMPARISON CHART

CONTROLLER MODELS	MAXIMUM STATIONS	SENSOR INPUTS	TWO-WIRE	FLOW*	REMOTE CONTROL	WEB ACCESS
ACC2	54, 225 two-wire	3 Clik, 1 Solar Sync, 6 Flow	ICD, 225 stations	HFS, WFS	ROAM, ROAM XL, Smartphone	Centralus: Wi-Fi, LAN, Cellular
ICC2	54	1 Clik or Solar Sync, 1 Flow	EZDS, 54 stations	HFS, WFS, HC Flow Meter	ROAM, ROAM XL, Smartphone	Centralus: Wi-Fi, LAN, Cellular
Pro-C	32	1 Clik, 1 Solar Sync or Flow	EZDS, 28 stations	HFS, WFS, HC Flow Meter	ROAM, ROAM XL, Smartphone	Centralus: Wi-Fi

\*Centralus communication module required for flow sensor input with Pro-C and ICC2 Controllers

# CENTRALUS™ SOFTWARE

Add cloud-based control and monitoring for Pro-C™, ICC2, and ACC2 Controllers with the mobile-friendly Centralus Irrigation Management Platform.

View Centralus Software today at [centralus.hunterindustries.com](http://centralus.hunterindustries.com).

## KEY BENEFITS

- Browser-based programming and communication software
- Highly secure cloud access
- Map-based navigation and status
- Instant remote control from mobile device
- Flow monitoring and reporting
- Alarm reporting and detailed irrigation history reports
- Responsive web design configures for your device, allowing the same controls from your smartphone, tablet, or desktop
- Operable in many international languages
- Wi-Fi, Ethernet, or cellular connectivity options
- Manage Solar Sync™ Sensor adjustments and delay settings for greater water savings
- Organise maintenance teams and their controllers into management groups

## OPERATING SPECIFICATIONS

- Operates in most modern browsers
- Secure internet connection for web-hosted application

## USER-INSTALLED OPTIONS

- ET-based Solar Sync Sensor (one per controller); **see page 156**
- Flow sensors including the Flow-Sync™ Sensor, Wireless Flow Sensor, HC Flow Meter, and other approved equals
- Connected controllers are compatible with licence-free ROAM/ROAM XL Remotes (pre-wired controller connection)

## COMMUNICATION OPTIONS

- Ethernet with RJ-45 connection, low data requirements
- 2.4 GHz (only) Wi-Fi router compatible, 802.11 b/g/n
- Supported security protocols: WPA/WPA2 Personal (only), TLS
- Cellular connectivity with ICC2 and ACC2 Controllers

COMMUNICATIONS	
Model	Description
PC-WIFI	Pro-C Wi-Fi connection
WIFIKIT	ICC2 Wi-Fi connection
LANKIT	ICC2 LAN (Ethernet) connection
CELLKIT	ICC2 cellular connection (service plan required)
A2C-WIFI*	ACC2 Wi-Fi connection
A2C-LAN	ACC2 LAN (Ethernet) connection
A2C-CELL-E*	Cellular Communication Module (3G LTE) for ACC2 Controllers
A2C-LTEM	ACC2 4G Global connection (monthly service plan required)

Note  
\* SASO Quality Mark Certified

COMMUNICATIONS ACCESSORIES	
Model	Description
ANT-EXT-KIT	Universal Antenna Extension Kit

## ACC2 COMMUNICATION MODULE INSTALLATION



A2C Communication Modules are installed behind the ACC2 Facepack



Manage and monitor controllers from anywhere



### Mobile-Friendly

The mobile-friendly Centralus Irrigation Management Platform provides highly secure, comprehensive cloud-based control and monitoring features. The connectivity allows you to view a controller's status, change settings, view forecasts, save water, and receive instant notification of important system alarms.

### User-Friendly

The addition of internet access brings dial-based Pro-C, ICC2, and ACC2 Controllers seamlessly into the world of next-generation irrigation control. From the intuitive Centralus dashboard, it's now easier than ever to add alarm monitoring, location information, remote operation, and scheduling to Pro-C, ICC2, and ACC2 Controllers.

### Easy to Upgrade

To upgrade to Centralus control, add a simple Wi-Fi, Ethernet (LAN), or cellular communication module to the controller:

- Pro-C: PC-WIFI
- ICC2: WIFIKIT, LANKIT, or CELLKIT (4G)
- ACC2: A2C-WIFI, A2C-LAN, A2C-LTEM (4G), or A2C-CELL-E (3G only)



### Centralus™ Software

Enable Pro-C, ICC2, and ACC2 Controllers with next-generation management technology. To learn more, visit [centralus.hunterindustries.com](http://centralus.hunterindustries.com).



**PC-WIFI**  
Height: 11 cm  
Width: 6 cm  
Depth: 1.5 cm



**WIFIKIT**  
Height: 10.8 cm  
Width: 6.4 cm (installed)  
Depth: 3.5 cm



**LANKIT**  
Height: 10.8 cm  
Width: 6.4 cm (installed)  
Depth: 3.5 cm



**CELLKIT**  
Height: 8 cm  
Width: 6 cm  
Depth: 4 cm



**A2C-WIFI\***  
Height: 7.6 cm  
Width: 5.7 cm  
Depth: 2.5 cm



**A2C-LAN**  
Height: 7.6 cm  
Width: 5.7 cm  
Depth: 2.5 cm



**A2C-LTEM**  
Height: 7.6 cm  
Width: 5.7 cm  
Depth: 2.5 cm



**Smart WaterMark**  
Recognised as a responsible water-saving tool when used with a Solar Sync Sensor

# ACC2

The multi-flow monitoring and management capabilities of the ACC2 Controller, combined with the option to upgrade to cloud-based Centralus™ control, make it the best choice for complex projects.

## KEY BENEFITS

- Number of stations:
  - 12 to 225, for large projects
  - Language-selectable, high-visibility display
- Up to 6 flow sensor inputs and 6 P/MV outputs
- 32 automatic programs (10 start times each) for precise plant management
- Block function to group stations and consolidate large systems
- Add a Solar Sync™ Sensor to save water based on local weather conditions
- Real-time flow monitoring detects and diagnoses leaks in up to 6 flow zones
- Flow management optimises watering at safe velocities
- High-visibility, full-colour display with reversible facepack
- Conditional Response “if/then” programming for active responses to sensor inputs
- User management password protection, with two levels of access
- Optional plug-in communications modules for cloud or network control
- Detailed alarm logs
- Extreme service lightning protection
- Easy Retrieve™ Memory programming backup and restore
- Non-Water Windows to inhibit accidental irrigation

## OPERATING SPECIFICATIONS

- Transformer input: 120/230 VAC
- Maximum AC current draw: 120 VAC, 2 A/230 VAC, 1 A
- Transformer output: 24 VAC, -3 A
- P/MV outputs (24 VAC): Up to 6; 3 included, 0.8 A each
- Sensor inputs: 3 Klik, 1 Solar Sync, and up to 6 Flow Sensors (3 included)
- Approvals: Wall Mounts IP55 (outdoor), Plastic Pedestal IP24, UL, cUL, FCC, CE, UKCA, RCM, ISED, SASO Quality Mark Certified\*
- Warranty period: 5 years

## USER-INSTALLED OPTIONS

- Centralus central control available with Wi-Fi, LAN, and cellular connections
- SCADA/automation compatible with BACnet, Modbus, RESTful API, and other protocols via Hunter field servers; **see page 132**

View Centralus Software today  
at [centralus.hunterindustries.com](http://centralus.hunterindustries.com).



**Metal Wall Mount**  
(grey or stainless steel)  
Height: 40 cm  
Width: 40 cm  
Depth: 18 cm



**Plastic Wall Mount**  
Height: 42 cm  
Width: 42 cm  
Depth: 17 cm



**Metal Pedestals**  
(grey or stainless steel)  
Height: 94 cm  
Width: 39 cm  
Depth: 13 cm



**Plastic Pedestal**  
Height: 97 cm  
Width: 55 cm  
Depth: 40 cm

Compatible with:



**Solar Sync  
Sensor**  
Page 156



**Flow-Sync™  
Sensor**  
Page 161  
**Wireless Flow  
Sensor**  
Page 162



**ROAM Remote**  
Page 146  
**ROAM XL Remote**  
Page 147



### Smart WaterMark

Recognised as a responsible water-saving tool when used with a Solar Sync Sensor

## ADDITIONAL SPECIFICATIONS BY MODEL

### ACC2 CONVENTIONAL

- Number of stations:
  - 12 to 54, for large projects
- Simultaneous station operation: up to 14 solenoids
- Expands in 6-station increments
- Extreme service lightning protection, standard on all A2M-600 Output Modules
- Station outputs: 0.8 A each

ACC2 CONVENTIONAL MODELS	
Model	Description
A2C-1200-M	12-station base unit controller, expands to 54 stations, grey steel wall mount, outdoor
A2C-1200-P	12-station base unit controller, expands to 54 stations, plastic outdoor wall mount
A2C-1200-SS	12-station base unit controller, expands to 54 stations, stainless steel wall mount, outdoor
A2C-1200-PP	12-station base unit controller, expands to 54 stations, plastic pedestal
A2M-600	6-station plug-in module for use with the A2C-1200 series controllers

## ACC2 ACCESSORIES FOR ALL MODELS

ACC2 ACCESSORIES	
Model	Description
A2C-F3	Optional flow meter expansion module (adds 3 inputs)
A2C-LEDKT	External status light shows controller status with door closed
A2C-WIFI*	ACC2 Wi-Fi connection
A2C-LAN	ACC2 LAN (Ethernet) connection
A2C-LTEM	Cellular Communication Module (4G LTE) for ACC2 Controllers (monthly service plan required)
A2C-CELL-E*	Cellular Communication Module (3G only) for use in areas where 4G is not available
ACC-PED	Grey pedestal for wall mount
PED-SS	Stainless steel pedestal for wall mount

### Note

\*SASO Quality Mark Certified

### ACC2 DECODER

- Number of stations:
  - 75, 150, or 225, for large projects
- Simultaneous station operation: up to 30 solenoids
- Operates Hunter's premium ICD Decoders over ID wire:
  - Up to 3 km (2 mm<sup>2</sup> wire)
  - Up to 4.5 km (3 mm<sup>2</sup> wire)
- See complete ICD Decoder key benefits and specifications on [page 140](#)
- Up to 3 two-wire paths per output module
- Diagnostics including decoder inventory, wire tracker, solenoid finder, and more

ACC2 DECODER MODELS	
Model	Description
A2C-75D-M*	75-station base model, grey metal outdoor, wall mount
A2C-75D-P*	75-station base model, plastic outdoor, wall mount
A2C-75D-SS*	75-station base model, stainless steel, wall mount
A2C-75D-PP*	75-station base model, plastic pedestal
A2C-D75*	75-station decoder expansion module

### Note

\*SASO Quality Mark Certified

## ACC2 REVERSIBLE FACEPACK AND AUTOMATIC DIAGNOSTIC MODE



# ICC2

This flexible control system can run any combination of conventional or two-wire outputs with the option to upgrade to cloud-based Centralus™ control.

## KEY BENEFITS

- Number of stations:
  - Conventional: 8 to 38 (plastic), 8 to 54 (metal and pedestal)
  - With two-wire EZDS: up to 54 (all enclosure options)
- 4 automatic irrigation programs with 8 start times per program and 12-hour run times per station
- Any 2 programs can operate simultaneously to improve irrigation efficiency
- 1 sensor input available for use with Solar Sync™ or any Clik Sensors
- 1 flow sensor input available with Centralus communication modules
- 1 P/MV output for pump start relay and master valve activation
- Upgradable to Centralus Software for web-based central control options

## OPERATING SPECIFICATIONS

- Transformer input: 120/230 VAC
- Transformer output (24 VAC): 1.4 A
- Station output (24 VAC): 0.56 A
- P/MV output (24 VAC): 0.56 A
- Approvals: Wall Mounts IP55 (outdoor), Plastic Pedestal IP24, UL, cUL, FCC, CE, UKCA, RCM, ISED
- Warranty period: 5 years

## USER-INSTALLED OPTIONS

- WIFIKIT, LANKIT, or CELLKIT communications for cloud-based Centralus control
- Compatible with Hunter Flow-Sync™ Sensor and HC Flow Meter for flow monitoring and high-flow shutdown capabilities via Centralus Software
- SCADA/automation compatible with BACnet, Modbus, RESTful API, and other protocols via Hunter field servers; **see page 132**

View Centralus Software today  
at [centralus.hunterindustries.com](http://centralus.hunterindustries.com)



### Plastic

Height: 30.5 cm  
Width: 35 cm  
Depth: 12.7 cm

### Metal

(grey or stainless steel)  
Height: 40.6 cm  
Width: 33 cm  
Depth: 12.7 cm



### Metal Pedestal

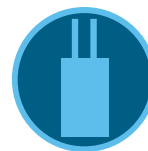
(grey or stainless steel)  
Height: 91.4 cm  
Width: 29.2 cm  
Depth: 12.7 cm



### Plastic Pedestal

Height: 99 cm  
Width: 61 cm  
Depth: 43 cm

Compatible with:



**EZ Decoder System**  
Page 142



**Solar Sync™ Sensor**  
Page 156



**ROAM Remote**  
Page 146  
**ROAM XL Remote**  
Page 147

ICC2



### Smart WaterMark

Recognised as a responsible water-saving tool when used with a Solar Sync Sensor

ICC2	
Model	Description
I2C-800-PL	8-station base model, plastic outdoor wall mount
I2C-800-M	8-station base model, grey metal outdoor, wall mount
I2C-800-SS	8-station base model, stainless steel, wall mount
I2C-800-PP	8-station base model, plastic pedestal
ICC-FPUP2	ICC2 Retrofit Kit for original ICC Controllers
ICC-PED	Grey pedestal for metal controller mount
ICC-PED-SS	Stainless steel pedestal for stainless steel controller mount
ICC-PWB	Optional pedestal wiring board for metal pedestals

ICC2 SERIES STATION EXPANSION	
Model	Description
ICM-400	4-station plug-in module with enhanced surge suppression
ICM-800	8-station plug-in module with enhanced surge suppression
ICM-2200	22-station expansion module (one per controller)
EZDS	See page 142 for model chart



**ICM400**  
Height: 11.5 cm  
Width: 6.5 cm  
Depth: 4 cm



**ICM800**  
Height: 11.5 cm  
Width: 6.5 cm  
Depth: 4 cm



**ICM2200**  
Height: 23.5 cm  
Width: 7 cm  
Depth: 4.5 cm



**EZ-DM**  
Height: 11.5 cm  
Width: 6.5 cm  
Depth: 4 cm



**EZ-1**  
Height: 7 cm  
Width: 4 cm  
Depth: 2 cm

# PRO-C™

Simple programming and flexible station expansion make the Pro-C Controller the professional's choice for residential and light commercial systems.

## KEY BENEFITS

- Number of stations:
  - Modular Pro-C
    - Conventional wiring from 4 to 23 stations
    - Hybrid EZ Decoder option up to 32 total stations (28 stations max. if two-wire only)
- 3 automatic irrigation programs with 4 start times per program and 6-hour run times per station
- 2 sensor inputs available for use with Solar Sync™ or any Klik Sensors
- 1 flow sensor input available with Centralus Wi-Fi module
- 1 P/MV output for pump start relay and master valve activation
- High-visibility, backlit display for simple programming in any light
- Optional Seconds Mode allows for station run times with seconds resolution from 1 second to 5 minutes
- QuickCheck™ Technology provides simple diagnostics of faulty field wiring
- Backward compatible with previous modular PC-400 models dated 2014 to 2023

## OPERATING SPECIFICATIONS

- Transformer input: 120 VAC or 230 VAC
- Transformer output (24 VAC): 1 A
- Station output (24 VAC): 0.56 A
- P/MV output (24 VAC): 0.28 A
- Approvals: IP44 (outdoor), UL, cUL, FCC, CE, UKCA, RCM, ISED
- Warranty period: 2 years

## USER-INSTALLED OPTIONS

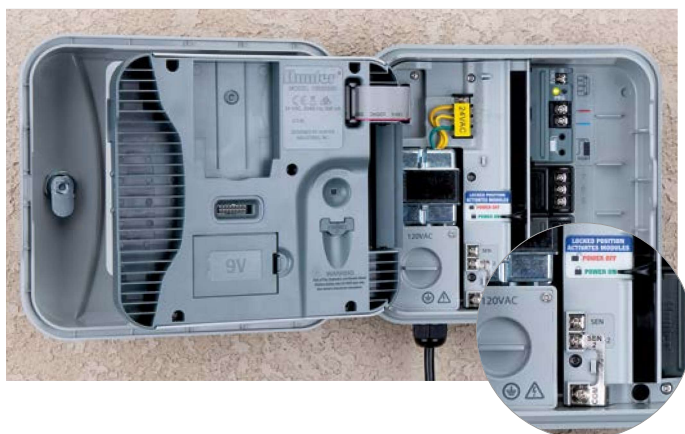
- PC-WIFI communication module for cloud-based Centralus control
- Compatible with Hunter Flow-Sync™ Sensor and HC Flow Meter for flow monitoring and high-flow shutdown capabilities via Centralus Software



### Plastic Outdoor

Height: 22.9 cm  
Width: 25.4 cm  
Depth: 11.4 cm

P2C-400 CONTROLLER WITH 2 SENSOR INPUTS



Compatible with:



**Solar Sync  
Sensor**  
Page 156



**ROAM Remote**  
Page 146  
**ROAM XL Remote**  
Page 147



**EZ Decoder  
System**  
Page 142



### Smart WaterMark

Recognised as a responsible water-saving tool when used with a Solar Sync Sensor

PRO-C	
Model	Description
P2C-400	4-station base, plastic wall mount cabinet, 120 VAC with U.S. cable and plug
P2C-401-E	4-station base, plastic wall mount cabinet, 230 VAC with European cable and plug
P2C-401-A	4-station base, plastic wall mount cabinet, 230 VAC with Australian cable and plug

PC-SERIES STATION EXPANSION	
Model	Description
PCM-300	3-station plug-in module
PCM-900	9-station plug-in module
PCM-1600	16-station plug-in module
PC-DM	EZ Decoder Output Module



**PCM300**  
Height: 7.5 cm  
Width: 3.5 cm  
Depth: 3 cm



**PCM900**  
Height: 7.5 cm  
Width: 7.5 cm  
Depth: 3 cm



**PCM1600**  
Height: 9 cm  
Width: 7.5 cm  
Depth: 3.5 cm



**PC-DM**  
Height: 7.5 cm  
Width: 7.5 cm  
Depth: 3 cm

# HUNTER FIELD SERVERS

These high-performance devices make it easy to communicate directly with Hunter ACC2 and ICC2 Controllers from centralised command centers.

## KEY BENEFITS

- Field server for BACnet, Modbus, RESTful API, and over 120 other automation protocols
- Up to 3,000 data points with complete documentation and demo software with Hunter licence agreement
- Integrates controllers directly into SCADA, Smart City, and BMS applications
- Allows total access to all controller commands, reports, and features from the customer's integration software
- Does not require internet connection or other proprietary control software
- 2 x RJ-45 receptacles for system and controller connections
- 1 x RS-485/RS-232 and 1 x RS-485
- DIN rail mounting included
- Made in USA

## OPERATING SPECIFICATIONS

- Serial (galvanic isolation): 1 x RS-485/RS-232 and 1 x RS-485
- Baud: 9600, 19200, 38400, 57600, 76800, 115000
- Ethernet: 2 x 10/100BaseT, MDIX, DHCP
- Operating temperature: -20°C to 70°C
- Relative humidity: 10% to 95% RH non-condensing



### Hunter Field Server

Height: 10.2 cm  
Width: 2.8 cm  
Depth: 6.8 cm



### Field Server Connections

#### HUNTER FIELD SERVER MODEL CHART

Model	Description
FS-3000	Field Server, 3,000 data points
FS-1000	Field Server, 1,000 data points



# BATTERY-OPERATED CONTROLLERS

## BATTERY-OPERATED CONTROLLER COMPARISON CHART

CONTROLLER MODELS	MAXIMUM STATIONS	SENSOR INPUTS	REMOTE CONTROL	SOLAR
BTT	2	N/A	BTT Bluetooth® App	N/A
NODE	6	1	N/A	SPNODE
NODE-BT	4	2	NODE-BT Bluetooth App	SPNODEBT
XC Hybrid	12	1	N/A	SPXCH, XCH-600-SSP, XCH-1200-SSP

Take advantage of smartphone-controlled, above-ground irrigation for easier access to the hose tap.

## KEY BENEFITS

- Number of zones:
  - 1 or 2 (fixed models)
- Battery-operated tap timer with Bluetooth® control
- 1 smartphone manages an unlimited number of controllers
- 1-second to 24-hour run time with 4 start times
- Cycling mode repeats continuously within user-defined water windows, perfect for drip systems or germinating seeds
- Suspend irrigation up to 99 days during the off-season, perfect for seasonal markets
- Manual push-button operation for quick operation without a smartphone
- Automatic water shutoff after 1 hour prevents water waste
- Blinking LED low-battery alert indicates battery replacement
- Alkaline batteries included for quicker installation
- Includes quick coupler adapter

## OPERATING SPECIFICATIONS

- Two 1.5V AA alkaline batteries (included)
- Flow rate: 1.9 to 2,271 L/H
- Recommended pressure: 0.5 to 8 bar (50 to 800 kPa)
- See friction loss chart on **page 220**
- Bluetooth 4.0/4.2 (BLE)
- Approvals: Plastic IPX6 (outdoor), UL, cUL, FCC, CE, UKCA, RCM, ISED
- Warranty period: 2 years

## APP SPECIFICATIONS

- iOS® 9.0 or above, Android™ 4.4 or above
- Maximum communication distance: 10 m
- See all app features at [hunter.info/BTT](http://hunter.info/BTT)



**BTT-101**  
 Inlet diameter: ¾" and 1"  
 Outlet diameter: ¾"  
 Height: 16.8 cm  
 Width: 12 cm  
 Depth: 6 cm



**BTT-201**  
 Inlet diameter: ¾" and 1"  
 Outlet diameter: ¾"  
 Height: 15.7 cm  
 Width: 13.5 cm  
 Depth: 7.6 cm



**BTT-LOC**  
 (optional)  
 Inlet diameter: ¾"  
 Outlet diameter: 16-18 mm  
 dripline  
 Height: 7 cm  
 Width: 3 cm



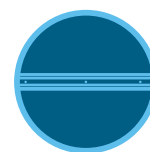
**Pressure Regulator**  
 (optional)  
 Inlet diameter: ¾"  
 Outlet diameter: ¾"  
 Height: 7 cm  
 Width: 4 cm

## BTT WITH HUNTER DRIPLINE (HDL) INSTALLATION



To control drip irrigation applications with BTT, use the BTT-LOC Drip Adapter, which connects BTT to HDL surface and subsurface systems.

Compatible with:



**HDL Dripline**  
 Page 171

BTT	
Model	Description
BTT-101	1-zone Bluetooth Tap Timer, 1" (25 mm) BSP and ¾" hose thread, quick coupler adapter
BTT-201	2-zone Bluetooth Tap Timer, 1" (25 mm) BSP and ¾" hose thread, quick coupler adapter

BTT ACCESSORIES	
Model	Description
BTT-LOC	BTT adapter for 16 to 18 mm dripline
PRLG203FH3MH	1.4 bar (140 kPa) pressure regulator, ¾" hose thread
PRLG253FH3MH	1.7 bar (170 kPa) pressure regulator, ¾" hose thread
PRLG303FH3MH	2 bar (200 kPa) pressure regulator, ¾" hose thread
PRLG403FH3MH	2.8 bar (280 kPa) pressure regulator, ¾" hose thread

The Bluetooth® word mark and logos are registered trademarks owned by Bluetooth SIG Inc. and any use of such marks by Hunter Industries is under licence. iOS is a trademark or registered trademark of Cisco in the U.S. and other countries and is used under licence. Android is a trademark of Google LLC.

# NODE

This battery-operated, waterproof controller offers automatic irrigation control for temporary irrigation and sites without electricity.

## KEY BENEFITS

- Number of stations:
  - 1, 2, 4, or 6 (fixed models)
- Battery-operated controller for automatic irrigation
- Battery-life indicator for battery replacement
- Waterproof enclosure seal protects against water ingress
- 3 flexible programs with 4 start times each and up to 6-hour run times
- Suspend irrigation up to 99 days during the off-season
- Easy Retrieve™ Memory backs up the full irrigation schedule if ever changed
- Seasonal adjustment for quicker schedule adjustments without changing run times
- Solar panel provides maintenance-free operation
- Mounts to Hunter solenoids, pipes, flat surfaces, or inside the valve box

## OPERATING SPECIFICATIONS

- One or two 9 V alkaline batteries or 800 mAh solar panel with charging cell
- Operates Hunter DC-Latching Solenoids; **see page 103**
- 30 m maximum wire runs, 1 mm<sup>2</sup> wire only
- Solar panel includes 12 m of direct-burial wire
- Station output: 9-11 VDC
- P/MV output: 9-11 VDC (multi-station models)
- Sensor inputs: 1 (wired rain, freeze, or wind only)
- Approvals: IP68 (submersible), UL, cUL, FCC, CE, UKCA, RCM, ISED
- Warranty period: 2 years

NODE	
Model	Description
NODE-100	Single-station battery controller and DC-Latching Solenoid
NODE-100-LS	Single-station battery controller
NODE-200	2-station battery controller
NODE-400	4-station battery controller
NODE-600	6-station battery controller
NODE-100-VALVE	Single-station battery controller with PGV-101G Valve and DC-Latching Solenoid (NPT threads)
NODE-100-VALVE-B	Single-station battery controller with PGV-101G-B Valve and DC-Latching Solenoid (BSP threads)
SPNODE	Solar Panel Kit for NODE controllers
458200	DC-Latching Solenoid (for all Hunter valves)



### NODE

Height: 6.4 cm  
Diameter: 8.9 cm



### SPNODE

Solar Panel Kit (optional)  
Height: 8 cm  
Length: 25 cm  
Width: 8 cm  
Controller to solar panel: 30 m maximum  
1 mm<sup>2</sup> direct-burial wire

### NODE



Compatible with:



**Mini-Clik™  
Sensor**  
Page 155



**Waterproof  
Wire Connector**  
Page 145

# NODE-BT

Manage gardens, greenhouses, traffic medians, and temporary irrigation sites from a smartphone without opening the valve box.

## KEY BENEFITS

- Number of stations:
  - 1, 2, or 4 (fixed models)
- Bluetooth® battery-operated controller for automatic irrigation
- Active station LEDs and battery-life LED indicator for replacement
- 3 programs with 8 start times each and 1 second to 12-hour run times
- Suspend irrigation up to 99 days during the off-season
- Manual push-button operation for quick operation without a smartphone
- Delay Between Stations for slow-closing valves or pump recharge
- Cycle and Soak prevents water waste and runoff in areas with elevation changes or tight soils
- Monthly and global seasonal adjustment for quicker schedule adjustments without changing run times

## OPERATING SPECIFICATIONS

- One or two 9 V alkaline batteries
- Operates Hunter DC-Latching Solenoids; **see page 103**
- 30 m maximum wire runs, 1 mm<sup>2</sup> wire only
- Station output: 9-11 VDC
- P/MV output: 9-11 VDC (multi-station models)
- Sensor inputs: 2 (wired rain, freeze, or wind only)
- Bluetooth 5.0 (BLE)
- Approvals: IP68 (submersible), UL, cUL, FCC, CE, UKCA, RCM, ISED
- Warranty period: 2 years

## APP SPECIFICATIONS

- iOS® 9.0 or above, Android™ 5.0 or above
- Maximum communication distance: 15 m
- See all app features at [hunter.info/NodeBT](http://hunter.info/NodeBT)

NODE-BT	
Model	Description
NODE-BT-100	Single-station Bluetooth battery controller and DC-Latching Solenoid
NODE-BT-100-LS	Single-station Bluetooth battery controller
NODE-BT-200	2-station Bluetooth battery controller
NODE-BT-400	4-station Bluetooth battery controller
NODE-BT-100-VALVE	Single-station Bluetooth battery controller with PGV-101G Valve and DC-Latching Solenoid (NPT threads)
NODE-BT-100-VALVE-B	Single-station Bluetooth battery controller with PGV-101G-B Valve and DC-Latching Solenoid (BSP threads)
SC-PROBE	Soil probe for moisture sensing (module is not used)
SP-NODE-BT	Solar Panel Kit for NODE-BT Controllers
458200	DC-Latching Solenoid

The Bluetooth® word mark and logos are registered trademarks owned by Bluetooth SIG Inc., and any use of such marks by Hunter Industries is under licence. iOS is a trademark or registered trademark of Cisco in the U.S. and other countries, and is used under licence. Android is a trademark of Google LLC.



**NODE-BT**  
Height: 8.3 cm  
Diameter: 8.9 cm

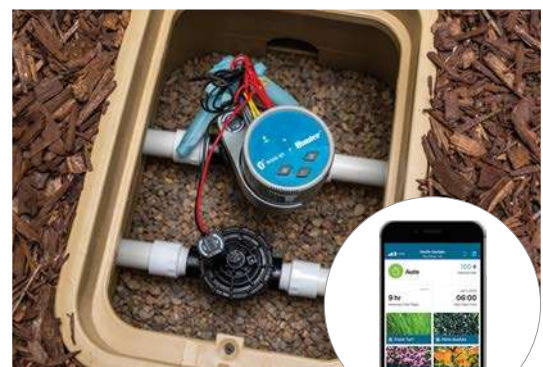


**SC-PROBE**  
Soil Moisture Sensor (optional)  
Height: 8.3 cm  
Diameter: 2.5 cm



**SP-NODE-BT**  
NODE-BT Solar Panel (optional)  
Height: 7.6 cm  
Width: 4.5  
Depth: 24 cm

## NODE-BT WITH PGV INSTALLATION



Compatible with:



**Mini-Clik™**  
Sensor  
Page 155



**Waterproof Wire**  
Connector  
Page 145

# XC HYBRID

Effectively manage landscapes where electricity is unavailable with this economical battery-operated or solar-powered controller.

## KEY BENEFITS

- Number of stations:
  - 6 or 12 (fixed models)
- 3 power options: AC power, battery, or solar panel compatible with ambient light
- Stainless steel enclosure protects against vandalism
- 3 programs with 4 start times each and up to 4-hour run times
- Easy Retrieve™ Memory backs up the full irrigation schedule
- Delay Between Stations for slow-closing valves or pump recharge
- Seasonal adjustment for quicker schedule adjustments without changing run times
- Solar panel provides maintenance-free operation
- Mounts to flat surfaces or steel posts

## OPERATING SPECIFICATIONS

- Plastic model operates six 1.5 V AA alkaline batteries
- Stainless steel model operates six 1.5 V C alkaline batteries
- Stainless steel solar model operates 800 mAh solar panel with charging cell
- Solar panel includes 12 m of direct-burial wire
- Controller to solar panel: 30 m maximum 1 mm<sup>2</sup> direct-burial wire
- All models operate optional 24 VAC plug-in wall adapter:
  - 120 VAC P/N 526500
  - 230 VAC Australian P/N 545500
  - 230 VAC European P/N 545700
- Operates Hunter DC-Latching Solenoids; **see page 103**
- Station output: 9 to 11 VDC
- P/MV output: 9 to 11 VDC
- Sensor inputs: 1 (wired rain, freeze, or wind only)
- Approvals: Plastic IP54 (outdoor), Stainless Steel IP24 (outdoor), UL, cUL, FCC, CE, UKCA, RCM, ISED
- Warranty period: 2 years



**Plastic**  
Height: 22 cm  
Width: 18 cm  
Depth: 10 cm



**Stainless Steel**  
Height: 25 cm  
Width: 19 cm  
Depth: 11 cm



**Stainless Steel Solar**  
Height: 27 cm  
Width: 19 cm  
Depth: 11 cm

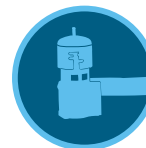


**SPXCH**  
Solar Panel Kit (optional)  
Height: 8 cm  
Length: 25 cm  
Width: 8 cm



**XCHSPOLE**  
Pole-Mounting Kit (optional)  
Height: 1.2 m

Compatible with:



**Mini-Clik™ Sensor**  
Page 155

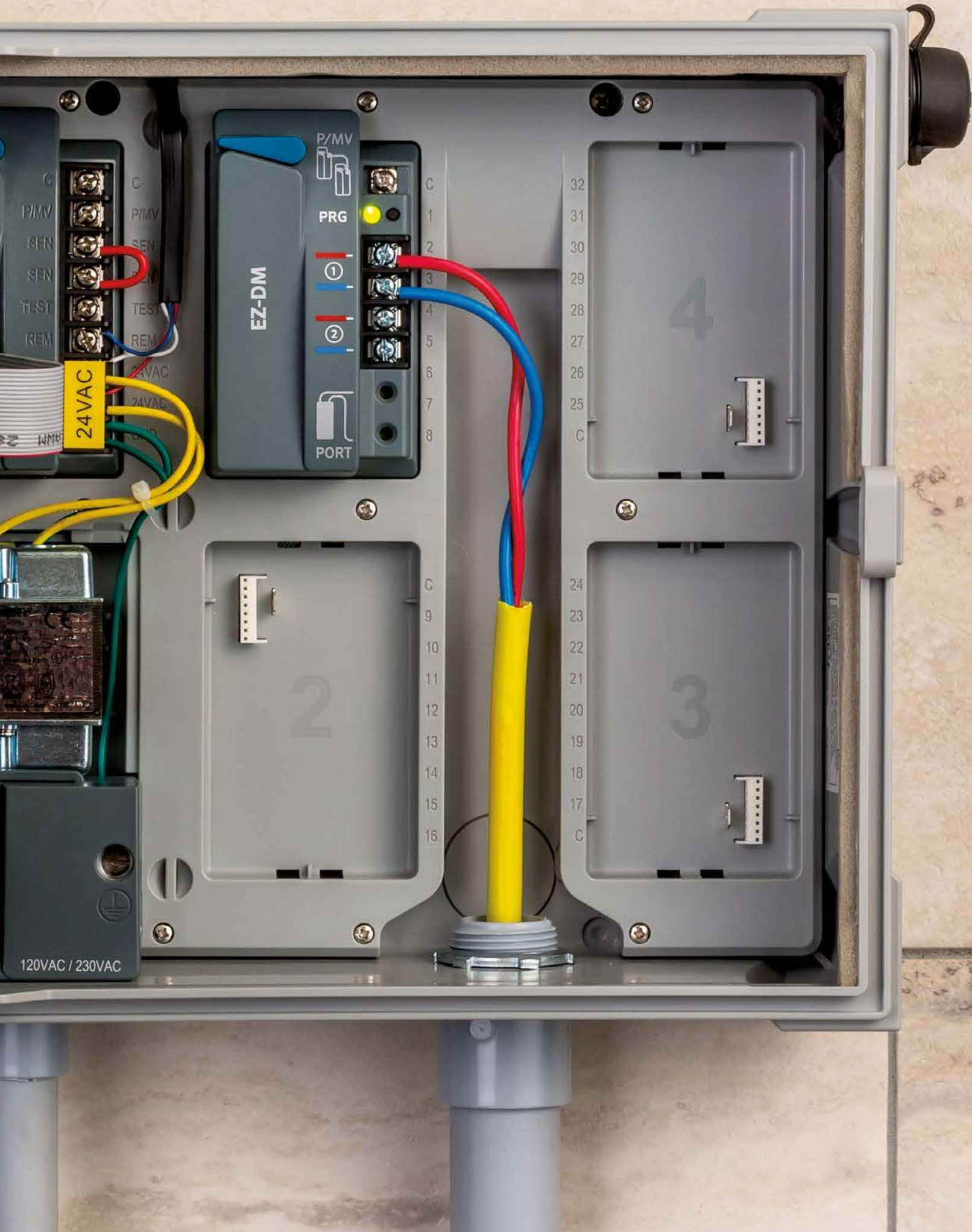
XC HYBRID	
Model	Description
XCH-600	6-station battery controller
XCH-600-SS	6-station battery controller, stainless steel
XCH-600-SSP	6-station controller, stainless steel, with mounted solar panel
XCH-1200	12-station battery controller
XCH-1200-SS	12-station battery controller, stainless steel
XCH-1200-SSP	12-station controller, stainless steel, with mounted solar panel
DCREL2	Latching sensor relay switch for pumps
458200	DC-Latching Solenoid (for all Hunter valves)

MAXIMUM WIRE RUNS	
Wire Size	Max. Distance
1.0 mm <sup>2</sup>	168 m
1.2 mm <sup>2</sup>	265 m
1.6 mm <sup>2</sup>	420 m
2.0 mm <sup>2</sup>	670 m

# CONTROLLER DECODERS & ACCESSORIES

---





# ICD

Hunter's premium two-wire decoders for long-distance, high-station-count ACC2 applications include two-way communications and integrated surge protection.

## KEY BENEFITS

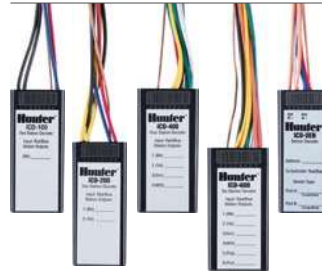
- ICD Decoders are compatible with ACC2 Decoder Controllers and legacy ACC-99D Decoder Controllers
- 1-, 2-, 4-, and 6-station versions provide maximum flexibility
- Sensor decoders allow Flow and Klik Sensor monitoring via the two-wire paths
- Field-programmable decoders accept station numbers directly, and do not require entering serial numbers into the control panel
  - Decoders can be programmed before installation at the controller interface
  - Use of the ICD-HP Programmer allows for wireless decoder programming or reprogramming after installation to the two-wire path
- Integrated surge protection eliminates the need for extra surge protection devices
- Colour-coded wiring connections simplify installation
- Industrial-grade, waterproof DRBY Splice Connectors included for two-wire path splices

## OPERATING SPECIFICATIONS

- Maximum recommended distance, decoder to solenoid: 45 m
- Maximum distance to decoder via two-wire path:
  - 2 mm<sup>2</sup> wire path: 3 km
  - 3.3 mm<sup>2</sup> wire path: 4.5 km
- Approvals: UL, cUL, FCC, CE, UKCA, RCM
- Decoder rating: IP68 (submersible)
- Warranty period: 5 years

## USER-INSTALLED OPTIONS

- Wireless handheld ICD-HP Programmer; **see page 141**
- DECSTAKE10 Universal Decoder Stake, 10-pack; **see page 144**



### ICD-100, 200, ICD-SEN

Height: 92 mm  
Width: 38 mm  
Depth: 12.7 mm

### ICD-400, 600

Height: 92 mm  
Width: 46 mm  
Depth: 38 mm

## DECODER MODELS

Model	Description
ICD-100	Single-station decoder with surge suppression and ground wire
ICD-200	2-station decoder with surge suppression and ground wire
ICD-400	4-station decoder with surge suppression and ground wire
ICD-600	6-station decoder with surge suppression and ground wire
ICD-SEN	2-input sensor decoder with surge suppression and ground wire

## ID WIRE MODEL GUIDE

2 mm <sup>2</sup> Decoder Cable		3.3 mm <sup>2</sup> Long-Range, Heavy-Duty Decoder Cable	
ID1GRY	Grey jacket	ID2GRY	Grey jacket
ID1PUR	Purple jacket	ID2PUR	Purple jacket
ID1YLW	Yellow jacket	ID2YLW	Yellow jacket
ID1ORG	Orange jacket	ID2ORG	Orange jacket
ID1BLU	Blue jacket	ID2BLU	Blue jacket
ID1TAN	Tan jacket	ID2TAN	Tan jacket

## ID WIRE MAXIMUM WIRE RUNS

ID 1 Wire	ID 2 Wire
1,500 m with legacy DUAL™ systems	2,300 m with legacy DUAL systems
3 km with ICD systems	4.5 km with ICD systems

Compatible with:



**Waterproof  
Splice Kit**  
Page 145

# ICD-HP PROGRAMMER

Gain wireless, handheld programming and diagnostic capabilities for Hunter ICD and DUAL™ Decoders.

## KEY BENEFITS

- Program or re-program decoder stations, whether new or installed\*
- Simplifies setup and diagnostics for sensor decoders
- Sensor test functions for Flow and Klik Sensors, plus built-in multimeter
- Communicates with decoder through plastic case: wireless electromagnetic induction saves waterproof connectors
- Compatible with Hunter ICD and legacy DUAL Decoders, as well as Pilot™ Two-Way Modules
- USB-powered for shop or office use; 4 AA batteries for field use
- All test leads and cables included in durable, foam-padded carrying case
- Turn decoder stations on and view solenoid status, current in milliamps, and more
- Waterproof programming cup
- Backlit adjustable display
- 6 operating languages
- \* **Note:** ICD-HP Programmer is not compatible with EZ-1 Decoders

## ELECTRICAL SPECIFICATIONS

- Power input: 4 AA batteries, or standard USB connector (included)
- Communications: wireless induction, range 25 mm
- Fused test leads for unpowered decoder functions

## APPROVALS

- UL, cUL, FCC, CE, UKCA, RCM

ICD-HP	
Model	Description
ICD-HP	Wireless handheld decoder programmer, includes all test and power leads, programming cup, and rugged carrying case



### ICD-HP

Height: 21 cm  
Width: 9 cm  
Depth: 5 cm

Packaged in an outdoor carrying case, this complete kit includes probes, induction cup, cable, USB power cable for bench use, and 4 AA batteries for fieldwork.

### ICD-HP



# EZ DECODER SYSTEM

Bring two-wire technology to more projects than ever before with the revolutionary, low-cost, and hassle-free EZ Decoder System for Pro-C™, HPC, ICC2, and HCC Controllers.

## KEY BENEFITS

- Number of stations:
  - Pro-C/HPC: Up to 28, plus master valve
  - ICC2/HCC: Up to 54, plus master valve
- No special wire or connectors required
- No special grounding or surge arrestors required in-line
- Programmable decoders with no need to input individual serial numbers
- P/MV can activate via the two-wire path for distant installations
- EZ-1 Decoders have built-in status LED for positive diagnostics

## OPERATING SPECIFICATIONS

- Electrical output on two-wire path: 24 VAC, 50/60 Hz
- Two-wire paths to the field:
  - EZ-DM: 2
  - PC-DM: 1
- Wire paths possible up to 1 km (see Wiring Table below)
- Each EZ-1 Decoder can activate two standard 24 VAC solenoids
- Operate any two decoders simultaneously for more efficient watering (ICC2 and HCC Controllers only)
- Approvals: UL, cUL, FCC, CE, UKCA, RCM, ISED
- EZ-1 Decoders are IP68 rated, submersible
- Warranty period: 3 years

## USER-INSTALLED OPTIONS

- Centralus™ Software with Pro-C and ICC2 Controllers
- Hydrowse™ Software with HPC and HCC Controllers
- EZ-DT Diagnostic Tool for wireless diagnostics with EZ-1 Decoders
- DECSTAKE10 Universal Decoder Stake, 10-pack; **see page 144**
- Compatible with Waterproof Wire Connector; **see page 145**



### Single-Station Decoder

Height: 73 mm  
Width: 42 mm  
Depth: 16 mm



### Decoder Output Module: EZ-DM

Height: 115 mm  
Width: 64 mm  
Depth: 42 mm



### Decoder Output Module: PC-DM

Height: 76 mm  
Width: 76 mm  
Depth: 32 mm

Compatible with:



**HCC Controller**  
Page 121



**ICC2 Controller**  
Page 128



**Pro-C Controller**  
Page 130

## WIRING TABLE

International Wire Gauge	Distance, single solenoid	Distance, 2 solenoids per output
0.5 mm <sup>2</sup>	167 m	83 m
0.8 mm <sup>2</sup>	267 m	133 m
1 mm <sup>2</sup>	333 m	167 m
1.5 mm <sup>2</sup>	500 m	250 m
2.5 mm <sup>2</sup>	833 m	417 m
4 mm <sup>2</sup>	1,333 m	667 m

### Note

Distances in the Wiring Table are calculated based on 50 Hz with a wire temperature of 50°C and a 10% safety factor.

## DECODER MODELS

Model	Description
EZ-DM	Decoder output module for ICC2 and HCC Controllers
PC-DM	Decoder output module for Pro-C and HPC Controllers
EZ-1	Single-station decoder with status LED
EZ-DT	EZ-DT Diagnostic Tool

# EZ-DT

Simplify maintenance of EZ Decoder Systems with the handheld, wireless EZ Decoder Diagnostic Tool.

## KEY BENEFITS

- Wireless, handheld diagnostic tool for EZ-1 Decoders
- Detect faults and perform electrical troubleshooting in the field without uninstalling decoders
- Quickly read decoder status, station address, current draw, and two-wire voltage to simplify maintenance
- Program decoder station address via the wired connection to speed up installation and save time on-site
- Update controller facepack or decoder module firmware via ribbon cable connection for flexibility when updating systems
- Communicate in your preferred language using the multilingual user interface
- Work reliably and efficiently on the go with power supplied by 4 AAA batteries

## OPERATING SPECIFICATIONS

- Power input: 4 AAA batteries (included)
- Communications: Wireless induction, 25 mm range from decoder to EZ-DT Diagnostic Tool
- 46 mm full-colour, backlit TFT display

## USER-INSTALLED OPTIONS

- Centralus™ Software with Pro-C and ICC2 Controllers
- Hydrawise™ Software with HCC and HPC Controllers
- DECSTAKE10 Universal Decoder Stake, 10-pack; [see page 144](#)

### DECODER MODELS

Model	Description
EZ-DM	Decoder output module for ICC2 and HCC Controllers
PC-DM	Decoder output module for Pro-C and HPC Controllers
EZ-1	Single-station decoder with status LED
EZ-DT	EZ-DT Diagnostic Tool



### EZ-DT Diagnostic Tool

Height: 197 mm  
Width: 70 mm  
Depth: 22 mm

### EZ-DT DIAGNOSTIC TOOL



Compatible with:



**HCC Controller**  
Page 121



**ICC2 Controller**  
Page 128



**EZ Decoder System**  
Page 142

# UNIVERSAL DECODER STAKE

The Universal Decoder Stake raises the decoder off the ground to keep two-wire installations organised, clean, and easily accessible during routine maintenance.

## KEY BENEFITS

- Raises decoder off the ground, so contractors don't have to dig the device out of the mud
- Holds Hunter decoders in end-up position for convenient access and wireless programming without removal
- Works with all Hunter decoders and most other brands, so contractors only need to stock one item
- Zip ties conveniently included to secure the stake during installation
- Sturdy construction ensures the stake won't break or bend when hammered into the dirt
- Made primarily from recycled materials with minimal packaging to prevent waste and minimise carbon footprint

## OPERATING SPECIFICATIONS

- Fits all Hunter decoders and most other brands
- Zip ties included
- Made of recycled materials

### Universal Decoder Stake

Height: 27.5 cm



### UNIVERSAL DECODER STAKE



### UNIVERSAL DECODER STAKE

Model	Description
DECSTAKE10	Universal Decoder Stake (10 per carton), zip ties included

# ANTENNA EXTENSION KITS

Use these flexible Antenna Extension Kits when buildings, terrain, or other obstructions prevent reliable wireless communications.

## KEY BENEFITS

- Universal Antenna Extension Kit option for Wi-Fi and cellular radio communications (ANT-EXT-KIT)
  - Wi-Fi: HCC Controller, A2C-WIFI
  - Cell: A2C-CELL-E, A2C-LTEM
- For ROAM XL Remotes, extend the receiver antenna up to 7.6 m with a convenient extension cable (ROAMXL-EXT)
- Simplify Plastic Pedestal installations with a flexible pedestal lid mounting option (PED-LID-ANT-BRKT)



### ANT-EXT-KIT

### ANTENNA EXTENSION OPTIONS

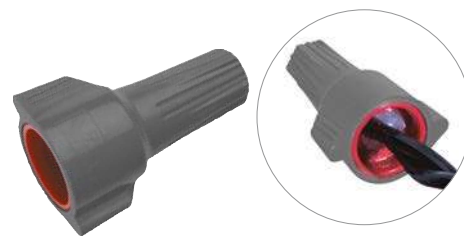
Model	Description
ANT-EXT-KIT	Universal Antenna Extension Kit for Wi-Fi and cellular communication hardware (2.7 m cable and mounting hardware)
ROAMXL-EXT	ROAM XL Antenna Extension Kit (7.6 m cable and mounting hardware)
PED-LID-ANT-BRKT	Plastic Pedestal Antenna Mount

# WATERPROOF WIRE CONNECTOR

Use this approved waterproof connector for EZ-1 Decoders and all above-grade solenoid and sensor wiring connections.

## KEY BENEFITS

- 100% silicone-based sealant protects against moisture and corrosion
- Designed as a single-use only connection
- UL Listed (UL486G) to 600 V for use in damp/wet locations or above-grade applications
- Easy to apply, pre-filled twist-on wire connectors
- Eliminates the need for heat-shrink or excessive taping
- Not for use in continual submersion applications, use DBRY-6 Splice Connectors
- Approvals: UL, cUL, FCC, CE, UKCA, RCM, RoHS, ISED



### Waterproof Wire Connector

Height: 3.5 cm  
 Minimum wire: 3 #0.8 mm<sup>2</sup>  
 Maximum wire: 2 #6 mm<sup>2</sup> with 1 #3 mm<sup>2</sup>

WIRE CONNECTOR	
Model	Description
WC100	Bulk 100 connectors in canister

### WC100 WIRE CONNECTOR



# WATERPROOF SPLICE KIT

Use this approved splice kit for all direct-burial two-wire ICD and legacy DUAL™ Decoder wiring connections, as well as Pilot™ Two-Way Modules.

## KEY BENEFITS

- UL Listed (UL486G) to 600 V for use in damp/wet location or direct-burial applications
- Waterproof, corrosion-proof, UV-rated, and impact resistant
- Snap-fit lid provides strain relief and three wire exits
- Prefilled with silicone that never hardens
- Two-part system includes red/yellow winged wire connector and silicone-filled tube
- Compatible with EZ-1 Decoder connections, but not a requirement
- Approvals: UL, cUL, FCC, CE, UKCA, RCM, RoHS, ISED

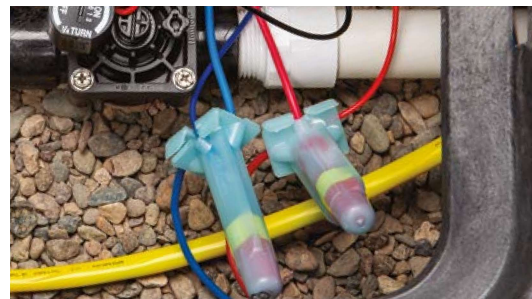


### Waterproof Splice Kit

Height: 9.5 cm  
 Minimum wire: 2-7 #0.8 mm<sup>2</sup>  
 Maximum wire: 2-3 #6 mm<sup>2</sup>

DBRY-6 SPLICE KIT	
Model	Description
DBRY100	Bulk 100 connectors (100 tubes loose in box, plus inner box with 100 wire nuts)
DBRY2X25	25 x 2-packs (2 tubes and 2 wire nuts in a plastic bag x 25 units)

### DBRY-6 WATERPROOF SPLICE KIT



# ROAM REMOTE

Enable convenient controller management from a distance with this handheld wireless remote.

## KEY BENEFITS

- Compatibility with Hunter X-Core™, X2™, Pro-C™, HPC, ICC2, HCC, ACC2, legacy ACC, and I-Core™ Controllers to enable remote management for projects of any size
- Manually start individual stations or programs for quick maintenance checks and troubleshooting
- 128 programmable addresses available prevents cross-communication between multiple remotes within close proximity of each other
- Programmable run times from 1 to 90 minutes, which will not overwrite regular automatic programming
- Manual operation up to 240 stations provides flexibility for larger projects

## OPERATING SPECIFICATIONS

- Range: 300 m from transmitter to receiver
- Transmitter power source: 4 AAA batteries (included)
- Receiver power source: 24 VAC, 0.010 A
- System operating frequency: 433 MHz
- SmartPort™ Wiring Harness installation: maximum 15 m from controller
- FCC, CE, and UKCA approved for use in the United States and internationally
- Warranty period: 2 years



### ROAM XL Transmitter and Receiver

Height: 18 cm  
Width: 6 cm  
Depth: 3 cm



### SmartPort Wiring Harness

Hunter remotes require the installation of a SmartPort Wiring Harness, which is wired to the terminals on the controller and allows for quick connection to any Hunter receiver.



### Wall-Mount Bracket for SmartPort Wiring Harness

P/N 258200

## ROAM

Model	Description
ROAM-KIT	Transmitter, receiver, SmartPort Wiring Harness, and 4 AAA batteries included
ROAM-R	Receiver unit
ROAM-TR	Transmitter unit and 4 AAA batteries included

## USER-INSTALLED OPTIONS

Model	Description
ROAM-WH	SmartPort Wiring Harness (length: 1.8 m)
ROAM-SCWH	Shielded SmartPort Wiring Harness (length: 7.6 m)
258200	Wall-mount bracket for SmartPort Wiring Harness

# ROAM XL REMOTE

Add professional, licence-free remote control to projects of any size with this long-range remote.

## KEY BENEFITS

- Compatibility with Hunter X-Core™, X2™, Pro-C™, HPC, ICC2, HCC, ACC2 legacy ACC, and I-Core™ Controllers to enable remote management for projects of any size
- Manually start individual stations or programs for quick maintenance checks and troubleshooting
- 128 programmable addresses available prevents cross-communication between multiple remotes within close proximity of each other
- Programmable run times from 1 to 90 minutes, which will not overwrite regular automatic programming
- Manual operation up to 240 stations provides flexibility for larger projects
- Rugged and water-resistant transmitter includes a large LCD display with simple push-button operation and a battery-life indicator

## OPERATING SPECIFICATIONS

- Range: 3 km (line of sight) from transmitter to receiver
- Transmitter power source: 4 AAA batteries (included)
- Receiver power source: 24 VAC, 0.010 A
- System operating frequency: 27 MHz
- SmartPort™ Wiring Harness installation: maximum 15 m from controller
- FCC approved (not available in EU and some other countries; check local regulations)
- Warranty period: 3 years



### ROAM XL Transmitter and Receiver

(without antenna)  
Height: 16 cm  
Width: 8 cm  
Depth: 3 cm



### SmartPort Wiring Harness

Hunter remotes require the installation of a SmartPort Wiring Harness, which is wired to the terminals on the controller and allows for quick connection to any Hunter receiver.



### Wall-Mount Bracket for SmartPort Wiring Harness

P/N 258200

ROAM XL	
Model	Description
ROAMXL-KIT	Transmitter, receiver, SmartPort Wiring Harness, 4 AAA batteries and plastic carrying case included
ROAMXL-R	Receiver unit (SmartPort Wiring Harness included)
ROAMXL-TR	Handheld transmitter and 4 AAA batteries included

USER-INSTALLED OPTIONS	
Model	Description
258200	Wall-mount bracket for SmartPort Wiring Harness
ROAM-WH	SmartPort Wiring Harness (length: 1.8 m)
ROAM-SCWH	Shielded SmartPort Wiring Harness (length: 7.6 m)
ROAMXL-EXT	ROAM XL Antenna Extension Kit (7.6 m cable and mounting hardware included)

# PSR

This reliable and economical Pump Start Relay family is perfect for systems that require pump activation.

## KEY BENEFITS

- Pump Start Relay family for a variety of voltage and power requirements
- 24 VAC flying leads make connection to the controller quick and easy
- Suitable for conventional wiring or two-wire decoder activation

## OPERATING SPECIFICATIONS

- Recommended installation: Minimum 4.5 m from irrigation controller; see chart on **page 221** for maximum distances
- Approvals: IP44 (outdoor), UL, cUL, FCC, CE, RCM, ISED
- Warranty period: 2 years



### Pump Start Relay

Height: 17 cm  
Width: 19 cm  
Depth: 12 cm

## PUMP START RELAY

### Model Description

<b>PSR-22</b>	Double-pole/single-throw Pump Start Relay for 120 VAC pumps up to 1.5 kW or 230 VAC pumps up to 2.2 kW
<b>PSR-52</b>	Double-pole/single-throw Pump Start Relay for 120 VAC pumps up to 2.2 kW or 230 VAC pumps up to 5.6 kW
<b>PSR-53</b>	Triple-pole/single-throw Pump Start Relay for 120 VAC pumps up to 2.2 kW, 230 VAC pumps up to 5.6 kW, or 230 VAC pumps up to 7.5 kW (3-phase)

## PUMP START RELAY ELECTRICAL SPECIFICATIONS

Model	Single-Phase		3-Phase**	Max. Full Load AMPS	Max. Resistive AMPS	Coil VA							
	kW AT 120 VAC	kW AT 230 VAC				kW AT 230 VAC	INRUSH		AMPS		HOLDING		
			50 Hz				60 Hz	50 Hz	60 Hz	50 Hz	60 Hz	50 Hz	60 Hz
<b>PSR-22</b>	1.5*	2.2*	N/A	30	40	33	30	1.38	1.25	8	6.5	0.33	0.27
<b>PSR-52</b>	2.2	5.6	N/A	40	50	65	60	2.71	2.50	7.5	5	0.31	0.21
<b>PSR-53</b>	2.2	5.6	7.5	40	50	65	60	2.71	2.50	7.5	5	0.31	0.21

**Note:** \*Approximate power

\*\* 3-phase power at 230 VAC is not commonly available in some international markets. Check local electrical codes for compatibility.

# PSR-B

For distant pump starts that require more power, choose the PSR-B.

## KEY BENEFITS

- Provides a solution for pump start relay installations that have insufficient power to activate the pump
- Includes solid state relay and local 24 VAC transformer for simple PSR activation

## OPERATING SPECIFICATIONS

- Primary AC power input: 120/230 VAC,
- Secondary AC power output: 24 VAC, 1.6 A
- Relay rating: Double-pole, double-throw solid state (10 A)
- Approvals: IP54 (outdoor), UL, cUL, FCC, CE, RCM, ISED
- Warranty period: 2 years

## PUMP START RELAY BOOSTER

### Model Description

<b>PSR-B</b>	Pump Start Relay Booster for increasing controller output power
--------------	---



### PSR-B Pump Start Relay Booster

Height: 22 cm  
Width: 18 cm  
Depth: 9.5 cm

# CONNECT YOUR WAY

Choose from a range of Wi-Fi, LAN (Ethernet), and cellular connection accessories to enable remote irrigation management on standalone controllers anytime, anywhere.

## HYDRAWISE™ SOFTWARE

### X2 Controller with WAND Module Installed



**WAND**  
Wi-Fi accessory for X2 Controllers, managed by Hydrawise Software  
page 118

## CENTRALUS™ SOFTWARE

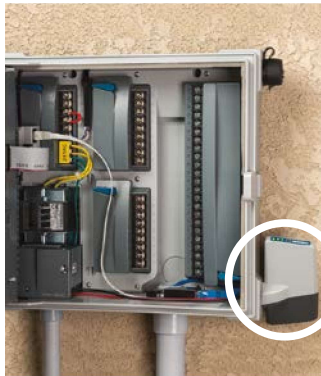
### PRO-C Controller with PC-WIFI Module Installed



**PC-WIFI**  
Wi-Fi accessory for Pro-C Controllers, managed by Centralus Software  
page 124

## CENTRALUS SOFTWARE

### ICC2 Controller with LANKIT Module Installed



**WIFIKIT**  
Wi-Fi accessory for ICC2 Controllers, managed by Centralus Software  
page 124



**LANKIT**  
Ethernet accessory for ICC2 Controllers, managed by Centralus Software  
page 124



**CELLKIT**  
Cellular accessory for ICC2 Controllers, managed by Centralus Software  
page 124

## CENTRALUS SOFTWARE

### ACC2 Controller with A2C-LTEM Module Installed



**A2C-WIFI**  
Wi-Fi accessory for ACC2 Controllers, managed by Centralus Software  
page 127



**A2C-LAN**  
Ethernet accessory for ACC2 Controllers, managed by Centralus Software  
page 127



**A2C-LTEM**  
Cellular accessory for ACC2 Controllers, managed by Centralus Software  
page 127